



Silixa LLC
3102 W Broadway St
Suite A
Missoula, MT 59808
+1 406 204 7298

FORGE 16A(78)-32 Stimulation Microseismic Detection and Location

Silixa LLC

September 2022

Contents

1	Introduction	3
2	Technological overview	4
2.1	Operating principle	4
2.2	Native acoustic output	4
3	Monitoring wells	6
3.1	Receiver positions	9
3.2	Data acquisition during 16A(78)-32 stimulation	9
4	Microseismic event detection	10
4.1	Microseismic survey	10
4.2	Detected events	13
5	Microseismic event location	15
5.1	Deliverables	17

1 Introduction

Acoustic data were recorded in observation wells 78A-32 and 78B-32 at the University of Utah FORGE site near Milford, UT (Fig. 1). The acoustic data were measured on Constellation™ fiber optic cable permanently installed in the well and monitored using Silixa's Carina® Distributed Acoustic Sensing (DAS) System. These data were recorded to identify any microseismic activity associated with the hydraulic stimulation during three injection stages in well 16A(78)-32.

FORGE site Milford, UT

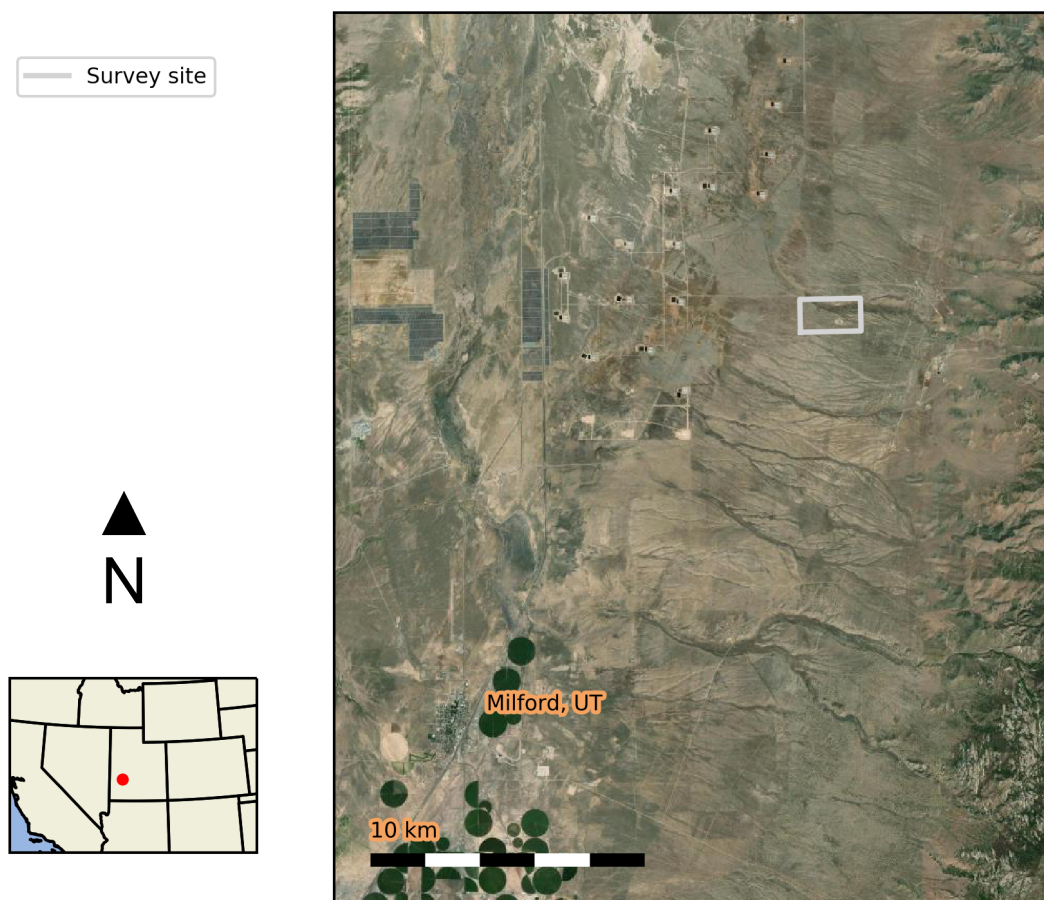


Figure 1: University of Utah FORGE site and surrounding area near Milford, UT.

2 Technological overview

2.1 Operating principle

The intelligent Distributed Acoustic Sensor (iDAS) makes it possible to create a digital record of acoustic signals along a continuous length of optical fiber. Figure 2 shows the principle of iDAS operation where an acoustic field interacts with the backscattered light along a continuous length of optical fiber. By analyzing the backscattered light, and measuring the time between the laser pulse being launched and the signal being received, the iDAS can measure the acoustic signal at all points along the fiber with lengths extending into tens of kilometers. The measurements along the entire length of the sensing optical fiber are time synchronized, and the system enables coherent phase and amplitude data for the acoustic signals.

2.2 Native acoustic output

The iDAS system natively measures signals proportional to strain rate. This strain rate is computed over a length of fiber equal to the gauge length of the system. In this survey iDAS was configured with a gauge length of 10 m. The measurement is a running average along the fiber. This means that in this survey every 1 m spaced receiver channel outputs the strain rate averaged over the 10 m gauge length centered on that channel.

Directional response

As a result of well-understood characteristics underlying the operation of the system, DAS data exhibit sensitivity which is dependent on the angle of incidence of seismic energy with respect to the orientation of the fiber. In general, this is expressed as enhanced sensitivity to those seismic signals with particle motions directionally aligned with the axial direction of the sensing fiber. Consequently, the system tends to be less sensitive to broadside P-wave arrivals; that is, P-waves which arrive from directions perpendicular to the axial orientation of the sensing fiber.

It is important to note that this directionality in sensitivity is dependent on the component of the seismic wave arriving at a certain angle of incidence. If the angle of incidence is defined as 0° for arrivals propagating along the axial dimension of the fiber and 90° for arrivals propagating perpendicular to the fiber then this means that the sensitivity to a P-wave arrival is greatest at angles of incidence near 0° . Note that for shear waves, the greatest sensitivity occurs where the deviatoric strain imposes the maximum fiber strain. This means that the sensitivity to shear waves is greatest for angles of incidence close to 45° (or 135°).

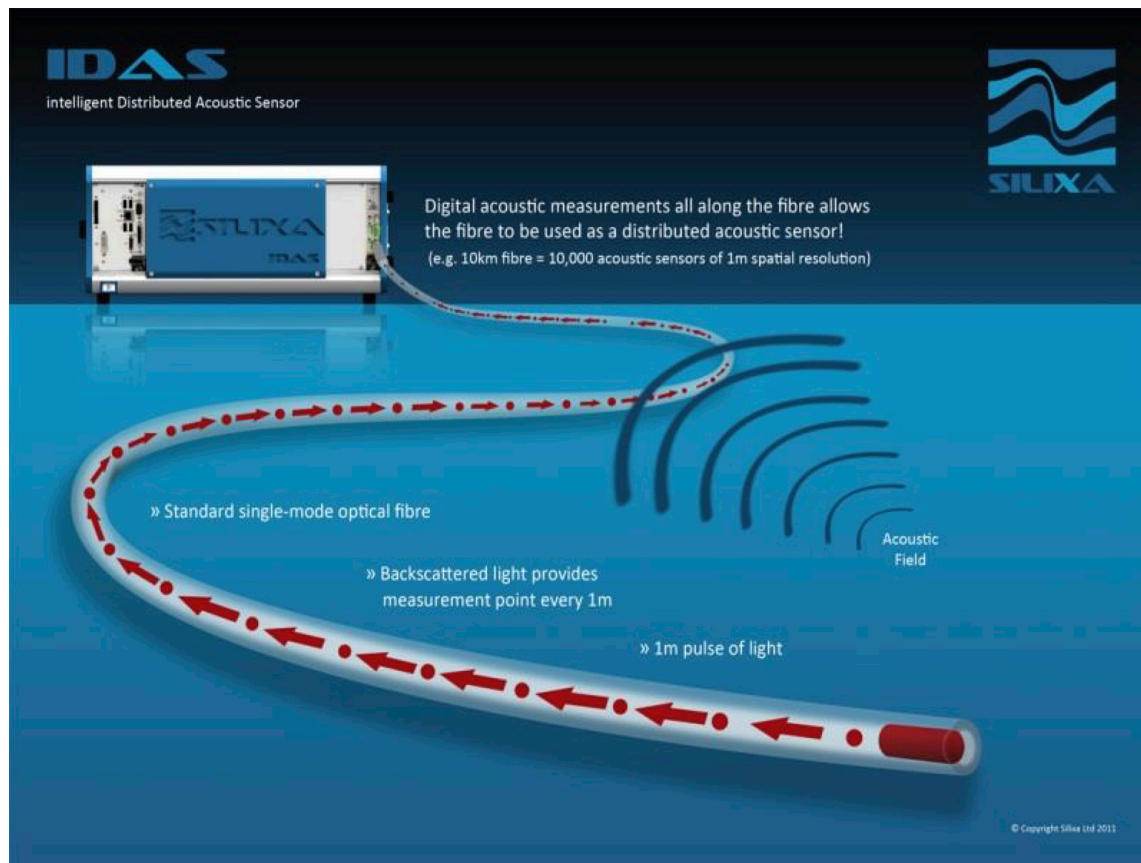


Figure 2: iDAS operational principle.

3 Monitoring wells

Observation wells 78A-32 and 78B-32 were fitted with Silixa's Constellation precision engineered optical fibers as part of the Carina sensing system. To allow for simultaneous data acquisition within both observation wells using a single DAS interrogator the optical paths of the two wells were joined with a section of single-mode fiber optic cable routed along the ground surface between the two well pads (Fig. 3).

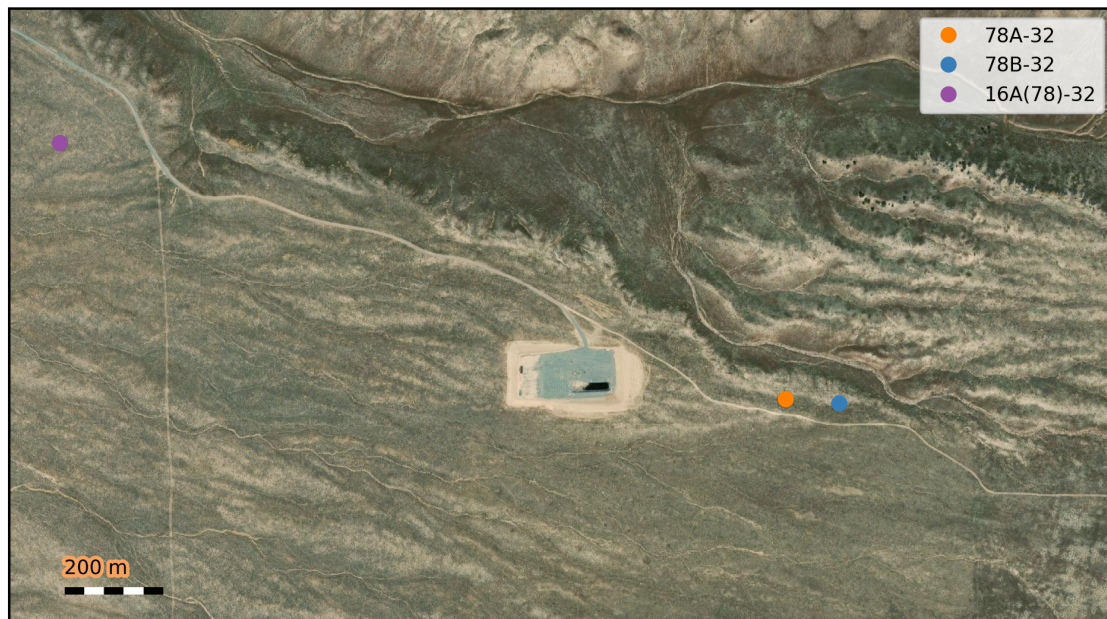


Figure 3: Wellhead locations of injection well 16A(78)-32 and observation well 78-32.

Optical fibers in the sensing cable in monitoring well 78A-32 were connected at well bottom in a pressure rated turn-around assembly. This optical configuration allows for sensing cables in multiple wells to be measured with a single interrogator instrument. Optical fibers in monitoring well 78B-32 were not connected in a turn-around assembly and all fibers reach end-of-fiber at the bottom of the cable completion. This meant that both monitoring wells could be recorded simultaneously with one interrogator by routing the optical path from the interrogator to 78A-32 and then on to 78B-32. The details of this fiber routing are provided in Figure 4.

A characteristic of using turn-around assemblies in observation wells can be that DAS spatial channels increment from well bottom to wellhead. So for this deployment, the receiver channels in 78A-32, as recorded in raw data files, appear to be in an inverted vertical orientation while receiver channels in 78B-32 are oriented from top to bottom (Fig. 5).

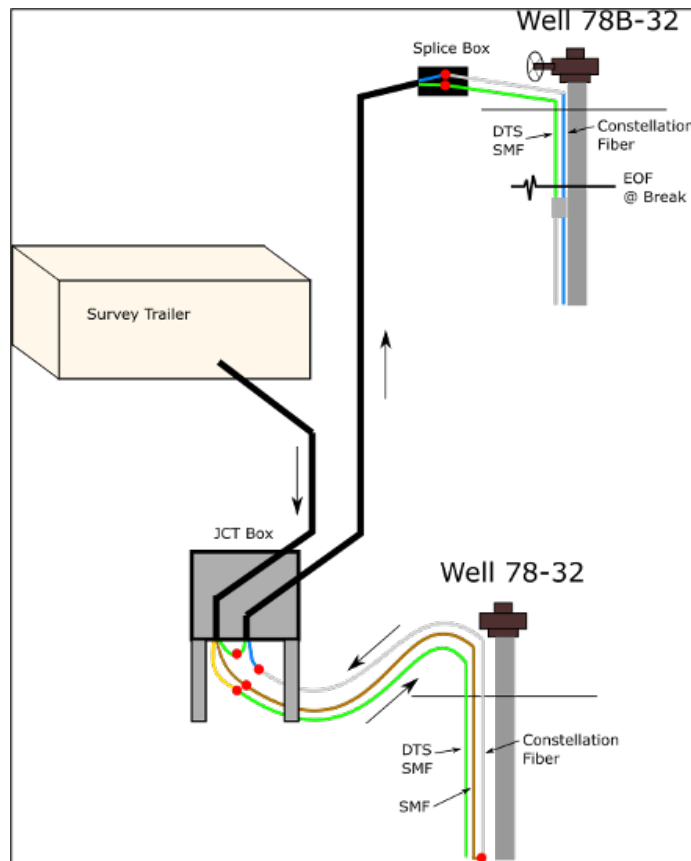


Figure 4: Optical routing of single-mode and Constellation fibers between well 78A-32 and 78B-32.

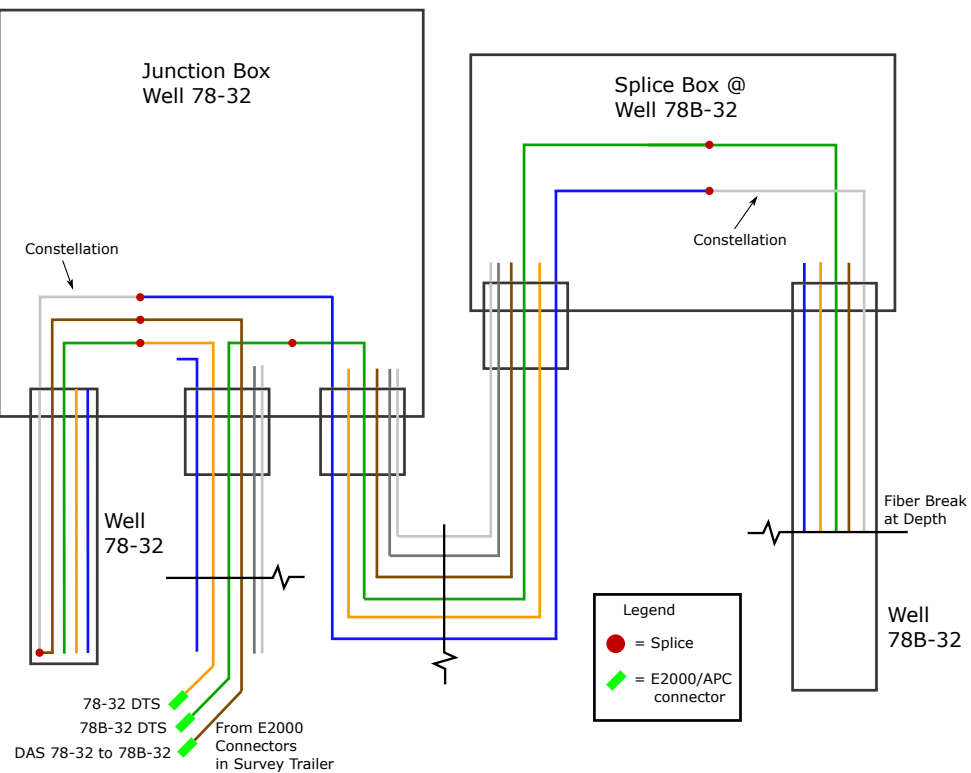


Figure 5: Detailed optical paths for DAS and DTS measurements in wells 78A-32 and 78B-32.

3.1 Receiver positions

Receiver coordinates on the Constellation and single-mode fibers were calibrated prior to data acquisition using a series of tap tests. The Constellation receiver channels were used for microseismic detection and the tap test parameters used for receiver position calibration are presented in Tables 1 and 2. Interpolation between wellhead and well-bottom receiver positions allows for the assignment of horizontal and vertical positions to each receiver along the Constellation fiber spans.

FD (m)	Depth (m)	Elevation (m)	Northing (m)	Northing (m)
2083.66	0.00	1701.92	335780.84	4262991.99
1093.76	989.90	712.02	335780.84	4262991.99

Table 1: Cable receiver position calibration for well 78A-32.

FD (m)	Depth (m)	Elevation (m)	Northing (m)	Northing (m)
2241.35	0.00	1705.62	335865.45	4262983.53
3434.77	1193.42	511.58	335865.45	4262983.53

Table 2: Cable receiver position calibration for well 78B-32.

3.2 Data acquisition during 16A(78)-32 stimulation

Seismic data were acquired in observation wells 78A-32 and 78B-32, concurrent with a three-stage stimulation performed on injection well 16A(78)-32. These data were analyzed in order to detect, and where possible locate, any microseismic activity associated with the stimulation schedule.

The Carina system equipment used to record the surveys is given in Table 3.

Equipment component	Specification
Interrogator	Carina-P13 10 m gauge length Software version: 2.5.0
Interrogator	Ultima19015 Software version: 7.0.23.0
RAID array	National Instruments 12-bay RAID 60 TB
High-accuracy clock	Internal GPS clock with antenna

Table 3: Carina interrogator equipment list.

The acquisition settings of the Carina interrogator determine the data output to the data files. During the survey, data were recorded continuously on the Carina system using the settings listed in Table 4.

Setting	Value	Units
Sampling frequency	4	kHz
Time Decimation	5	
Laser launch rate	20	kHz
Spatial sampling	1	m
Measurement length	2482	m
Gauge length	10	m

Table 4: Carina settings for the microseismic survey.

4 Microseismic event detection

4.1 Microseismic survey

Data acquisition coincident with the timing of the detonation of the first perforation cluster associated with the stimulation of stage 1 began Sat April 16, 2022 16:30 (UTC) and ended Saturday April 23, 2022 13:35 (UTC). To record any microseismicity induced by the stimulation of 16A(78)-32, passive seismic data were recorded continuously during this time. DAS data was monitored visually where possible throughout the course of the survey and with an automatic event detection algorithm to detect any microseismic events that could be correlated to the pressurization of the injection well. Location solutions for detected events were not attempted in real time. Data were recorded continuously throughout the multi-stage stimulation past the completion of the stimulation.

Perf shots

Since DAS data were acquired during the time of perforation detonations for all three stages an attempt was made to identify the energy generated by the shots in the observation wells. The shots from all three stages can be identified in the recorded DAS data. The wavefields from shots corresponding to stage 2 (Fig. 8 and 9) and stage 3 (Fig. 10 and 11) are strong enough in amplitude to allow for clear identification of P- and S-wave direct arrivals. The stage 1 shot (Fig. 6 and 7) is much weaker in the DAS data and only a P-wave arrival can be seen. This may be due to the placement of the stage 1 shot depth below the end of casing or because the explosive yield and/or cluster density was less for this stage compared with the latter two stages.

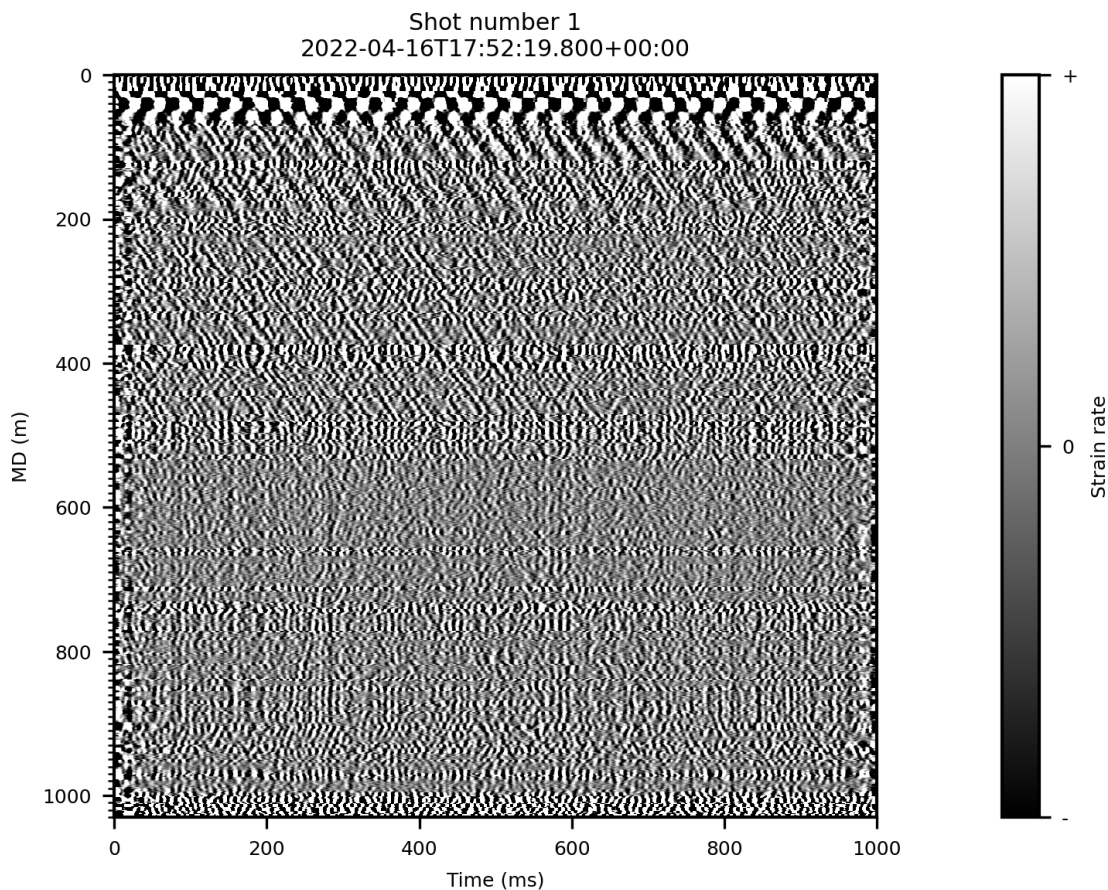


Figure 6: Stage 1 shot recorded in well 78A-32 at April 16, 2022 17:52:19 (UTC).

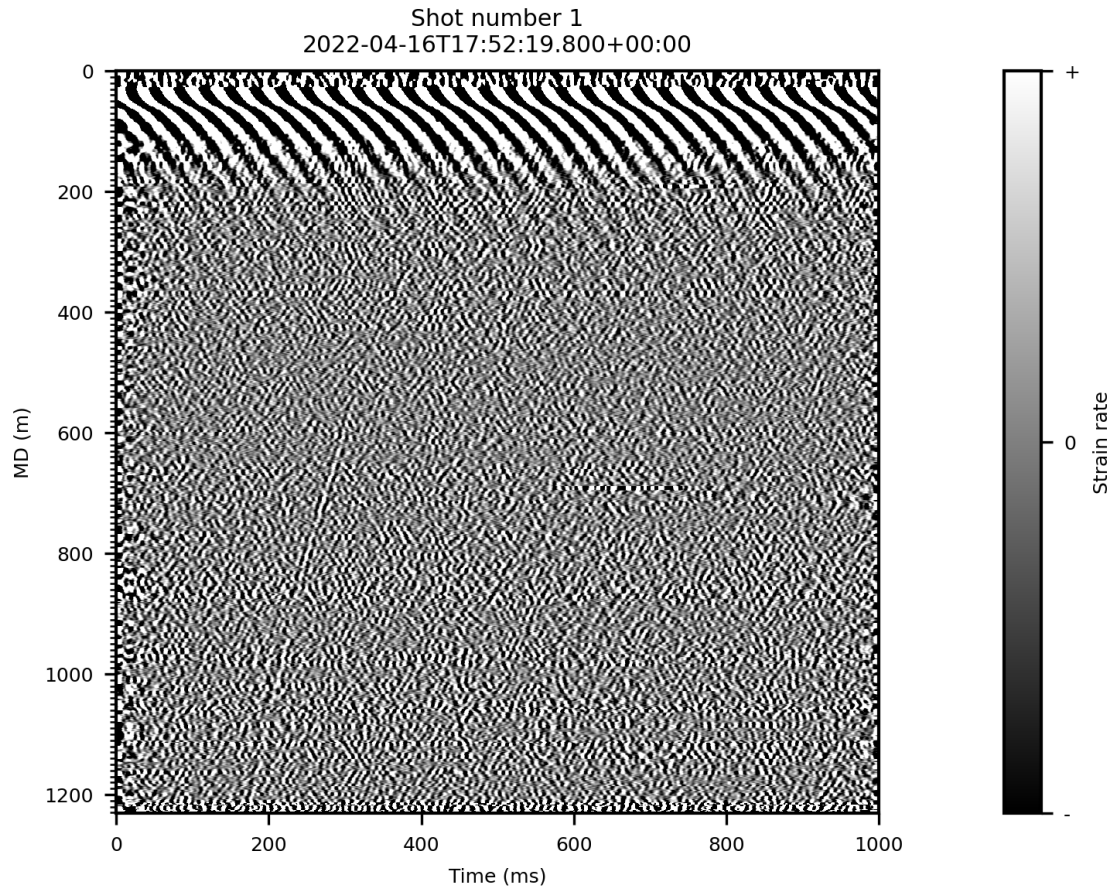


Figure 7: Stage 1 shot recorded in well 78B-32 at April 16, 2022 17:52:19 (UTC).

Microseismic detection

To detect microseismic events a short-term average/long-term average (STA/LTA) detection algorithm with a signal-to-noise (SNR) threshold was used in combination with bandpass filtering (**10–150 Hz**). The detection algorithm was applied to the downhole Constellation receiver channels in the two observation wells simultaneously. This allowed for the possibility of events to be detected in well 78A-32, or 78B-32 or in both wells. Seismic data were acquired continuously from the beginning of stage 1 through the end of stage 3 and the detection algorithm was applied to the full suite of seismic data. The STA/LTA algorithm produced trigger times on true microseismic event waveforms as well as false detections during which time there was no apparent seismic energy above the noise level.

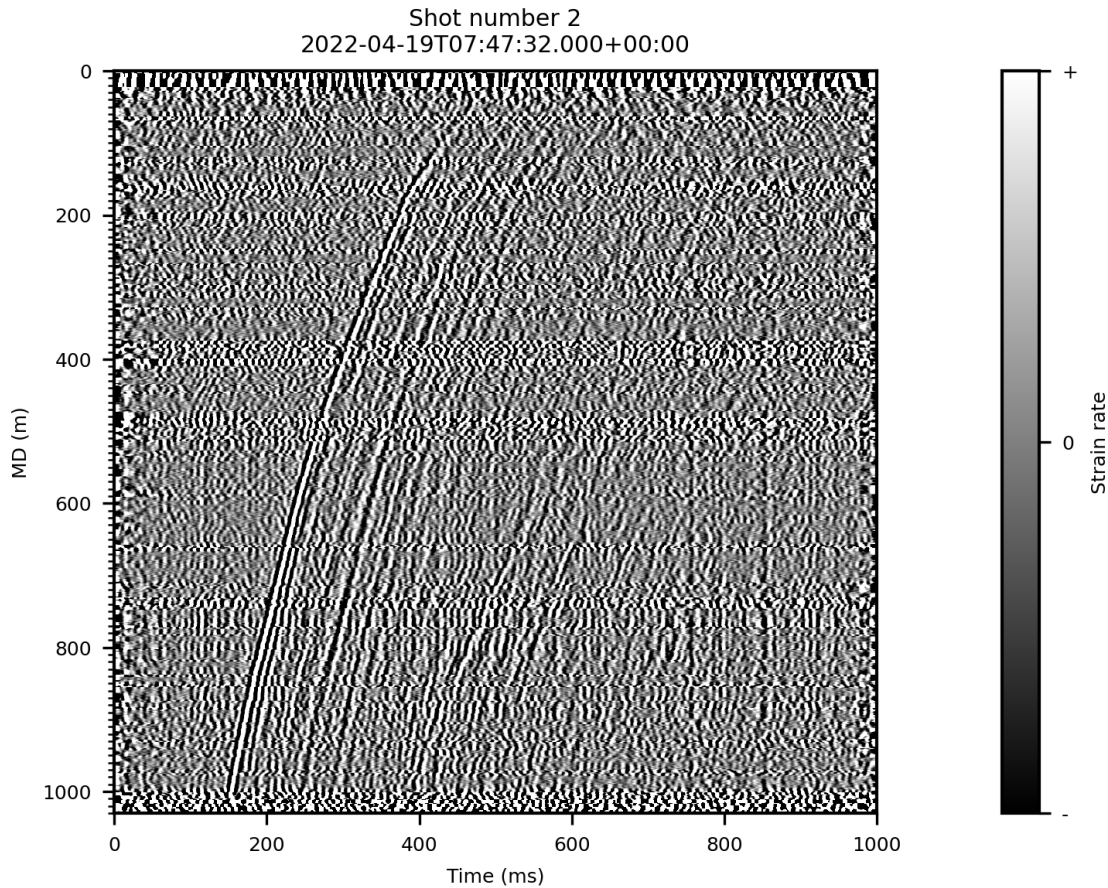


Figure 8: Stage 2 shot recorded in well 78A-32 at April 19, 2022 07:47:32 (UTC).

4.2 Detected events

The catalog of trigger times were sorted by stimulation stage and a review of the data corresponding to trigger times was conducted on site. Following review, the trigger times with evident microseismic events in either or both of the observation wells were collated into an event catalog (section 5.1) and are visualized in Figure 12.

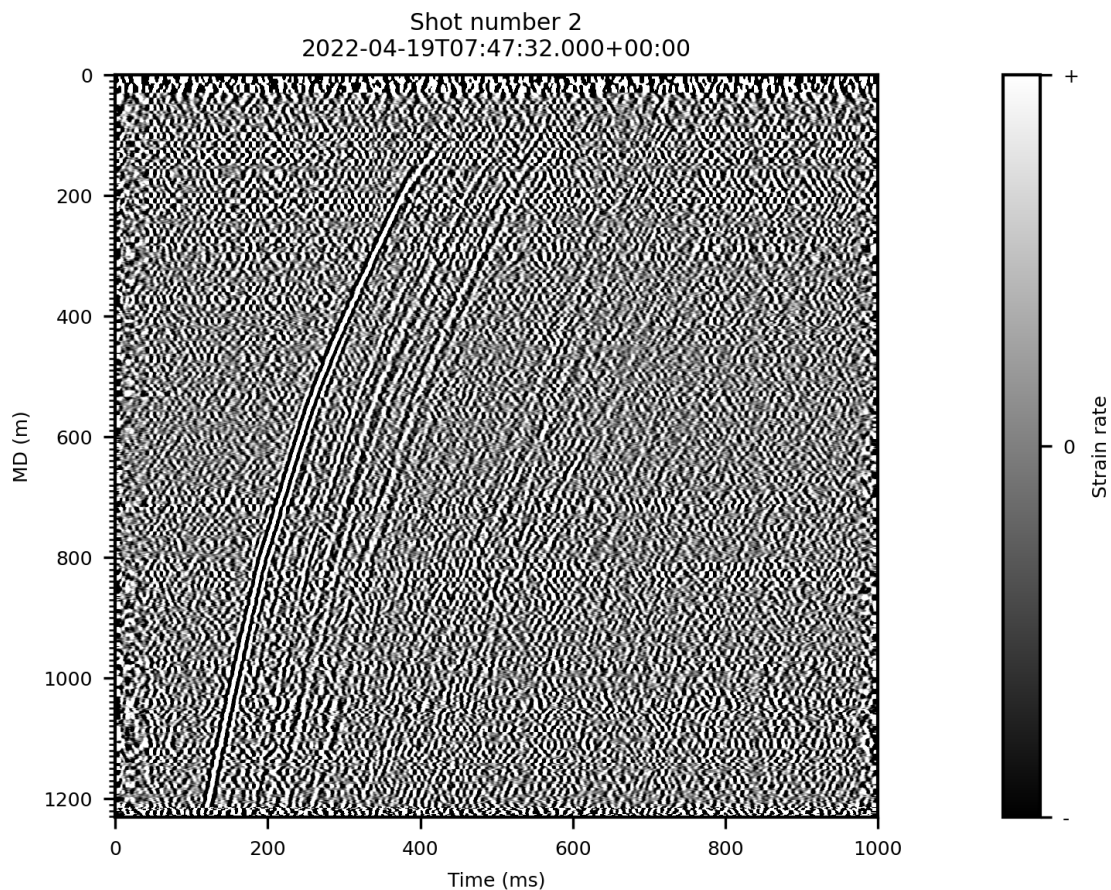


Figure 9: Stage 2 shot recorded in well 78B-32 at April 19, 2022 07:47:32 (UTC).

Stimulation stages

The treatment conditions (pressure and cumulative volume) for stages 1–3 are shown in Figures 13 through 15 along with hourly triggers and true microseismic event detections.

Event detection metrics

Many false event detections were identified in the seismic data during stages 1 and 2 due to well intervention activities in well 78B-32. Since these in-well activities generated real, but undesirable, acoustic

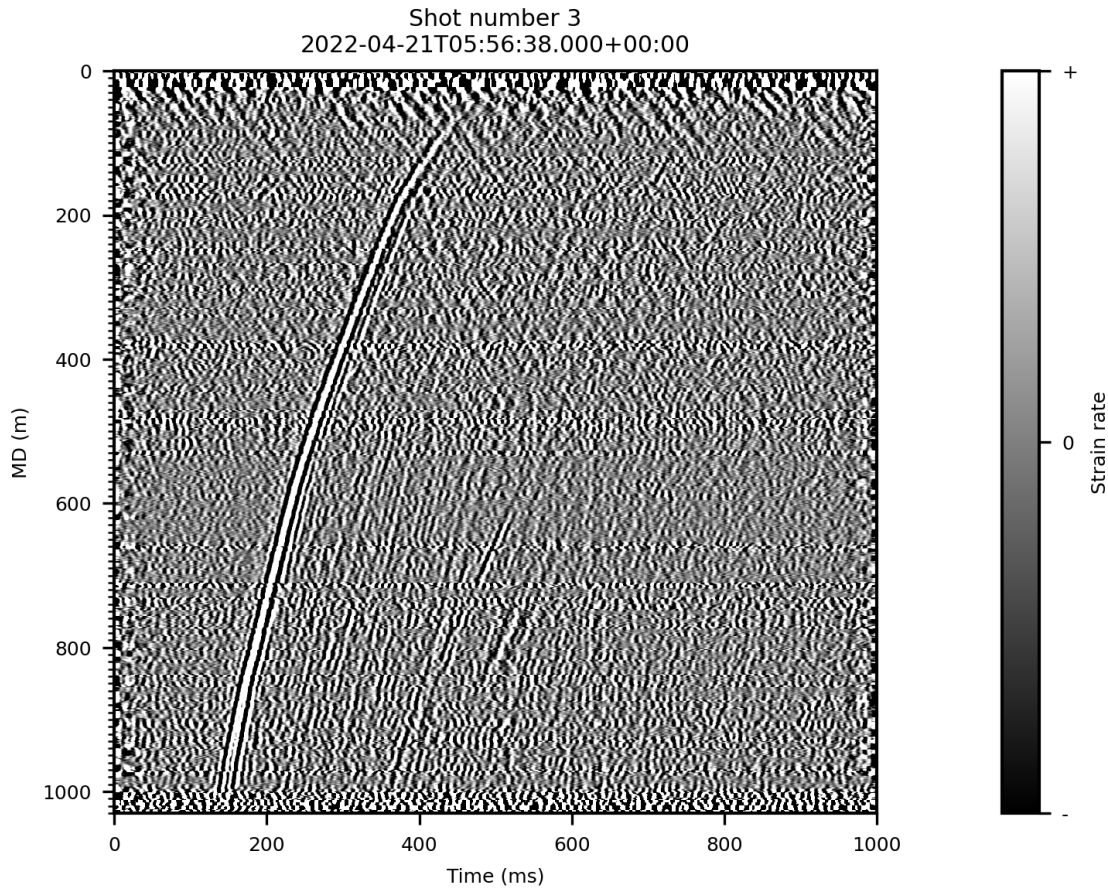


Figure 10: Stage 3 shot recorded in well 78A-32 at April 21, 2022 05:56:38 (UTC).

signal along the sensing fiber it was necessary to manually identify and eliminate a large number of false detections during these two stimulation stages. By the time of stage 3, in-well intervention work had ceased and the ratio of total triggers to true microseismic events improved greatly (Fig. 16).

5 Microseismic event location

An attempt was made to resolve solutions for microseismic event locations for all detected events in the event catalog. Owing to the limitations inherent to the placement and completion depths of the observation wells, the quality of these location solutions varies. Event loci are shown in Figure 17 in

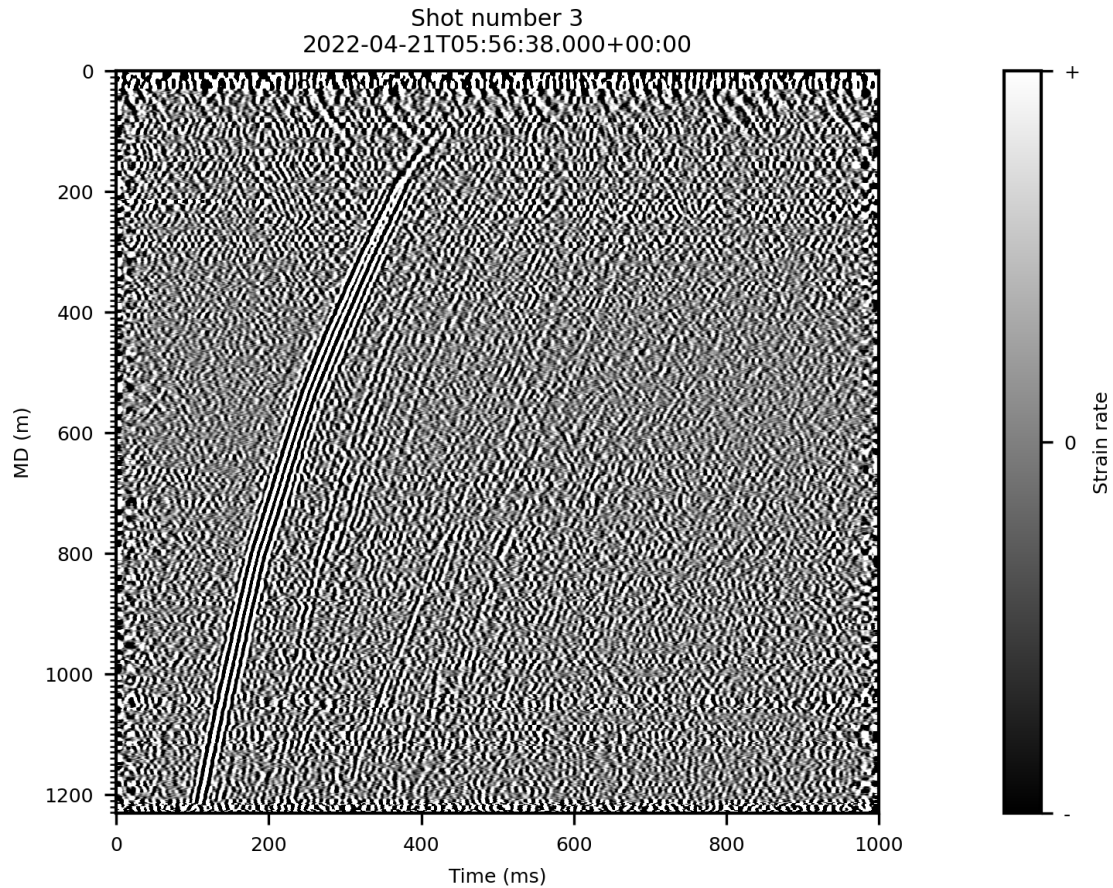


Figure 11: Stage 3 shot recorded in well 78B-32 at April 21, 2022 05:56:38 (UTC).

reference to the injection well and observation wells 78A-32 and 78B-32.

The truncated fiber completion depths means that no microseismic events detected during the stimulation of 16A(78)-32 were recorded at the observers with a double-ended moveout, limiting the constraint on hypocentral depth. Since the two observation wells were in very close proximity, there was weak constraint on event hypocentral azimuth (from the perspective of the observation wells). A large baseline distance between observation wells would have provided better constraint on the azimuth of detected events. Further, for a limited number of events with extremely low SNR it was not possible to converge on an acceptable location solution. In cases where location solutions were not found, the event catalog lists trigger times, but no event location coordinates.

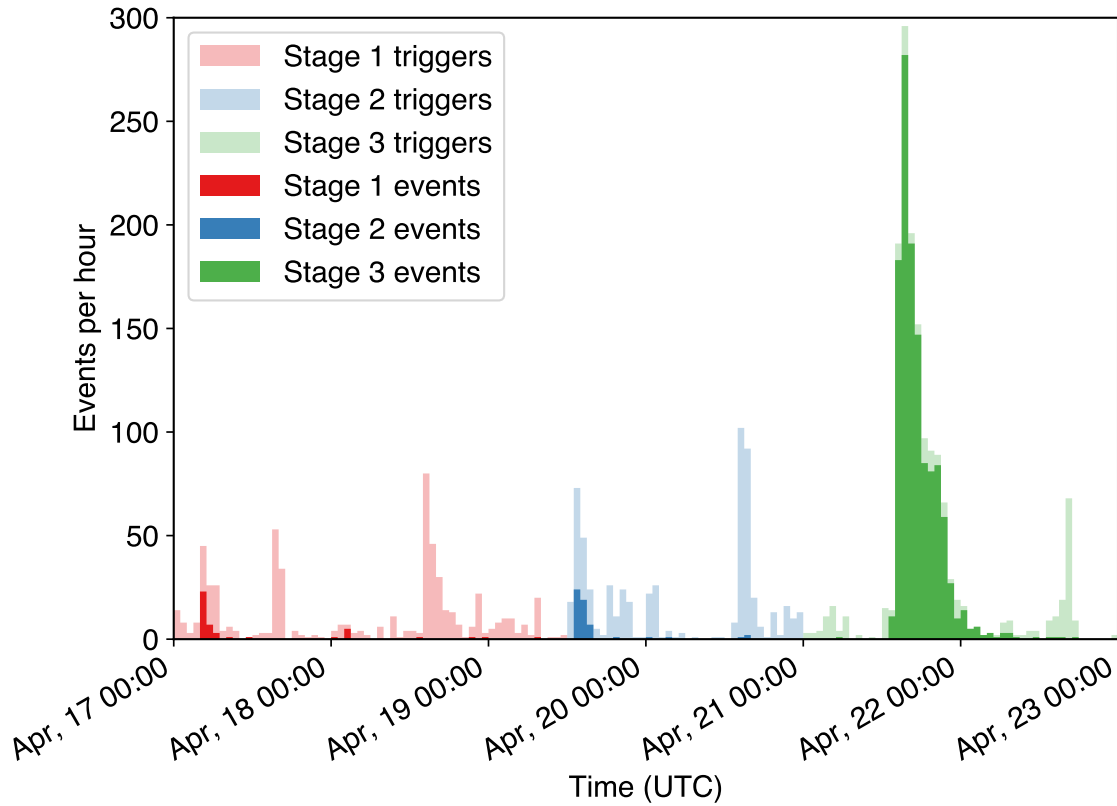


Figure 12: Hourly count of triggered and verified microseismic events detected in observation wells 78A-32 and 78B-32 during stages 1–3.

5.1 Deliverables

Deliverables for the 16A(78)-32 stimulation mobilization include a microseismic event catalog for detected and located events, extracted detected event SEG-Y files and conversion of all raw TDMS Carina files to SEG-Y format.

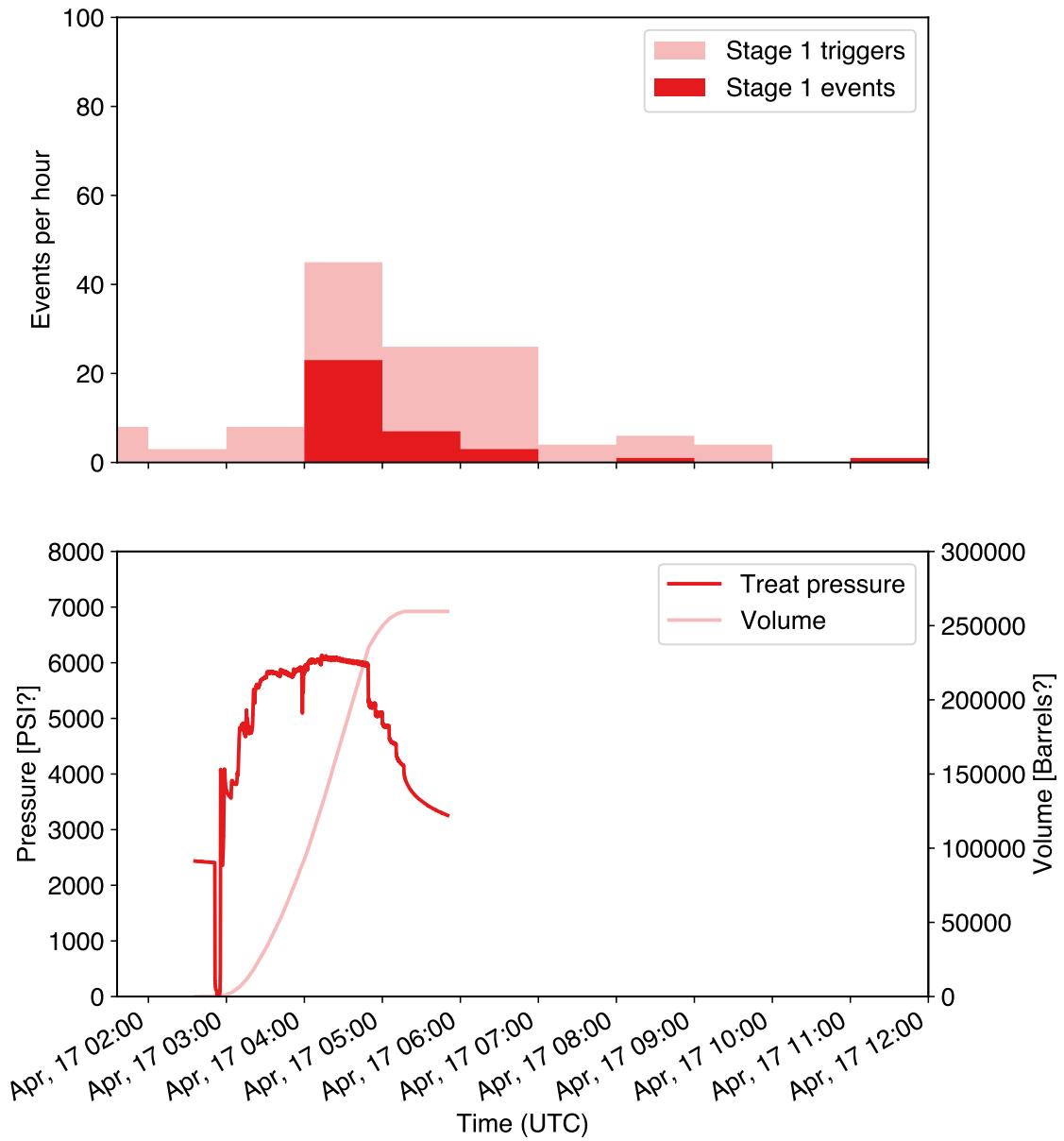


Figure 13: Top: triggered and verified microseismic events during stage 1. Bottom: well stimulation conditions for treatment pressure and cumulative fluid volume during stage 1.

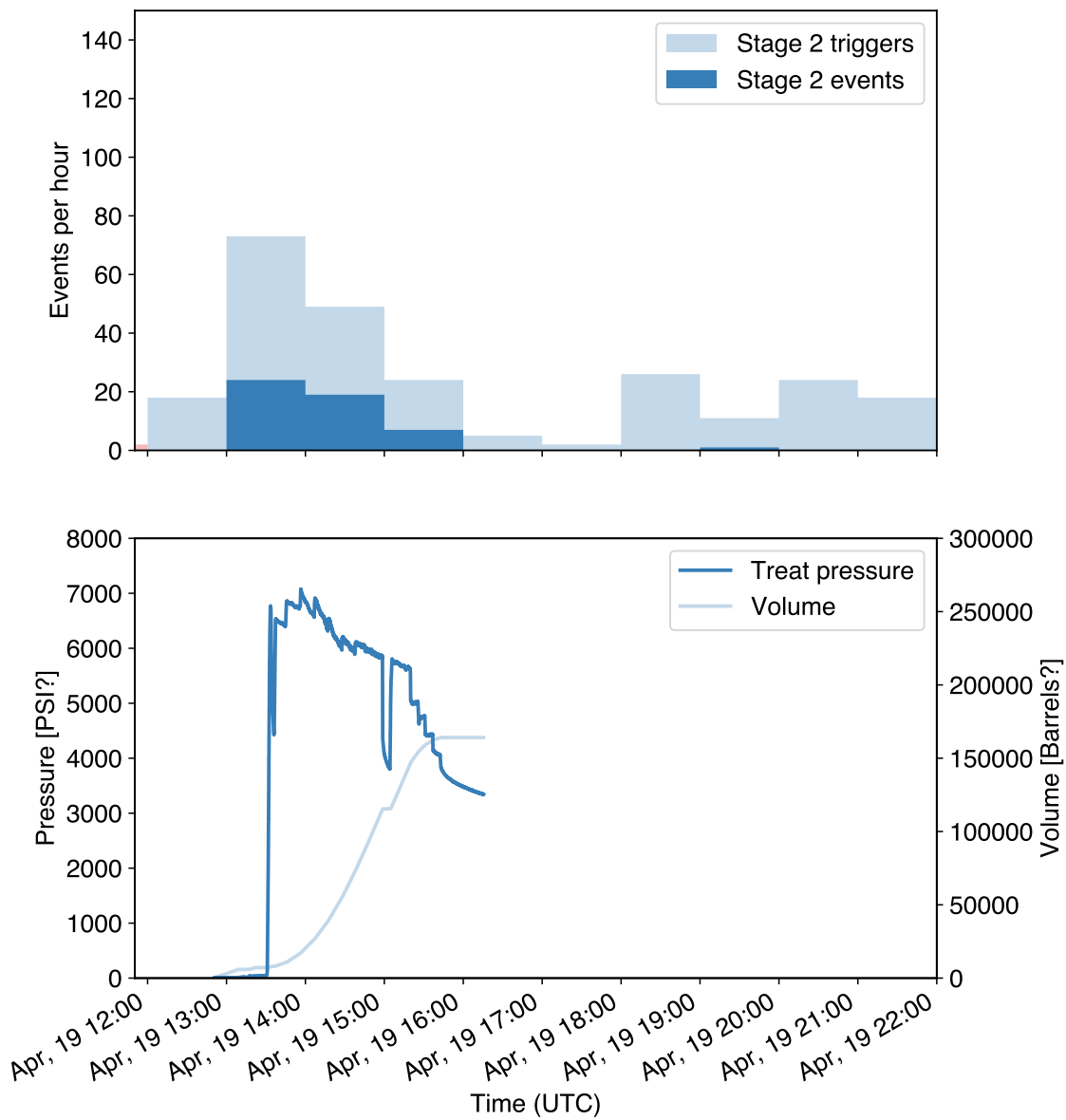


Figure 14: Top: triggered and verified microseismic events during stage 2. Bottom: well stimulation conditions for treatment pressure and cumulative fluid volume during stage 2.

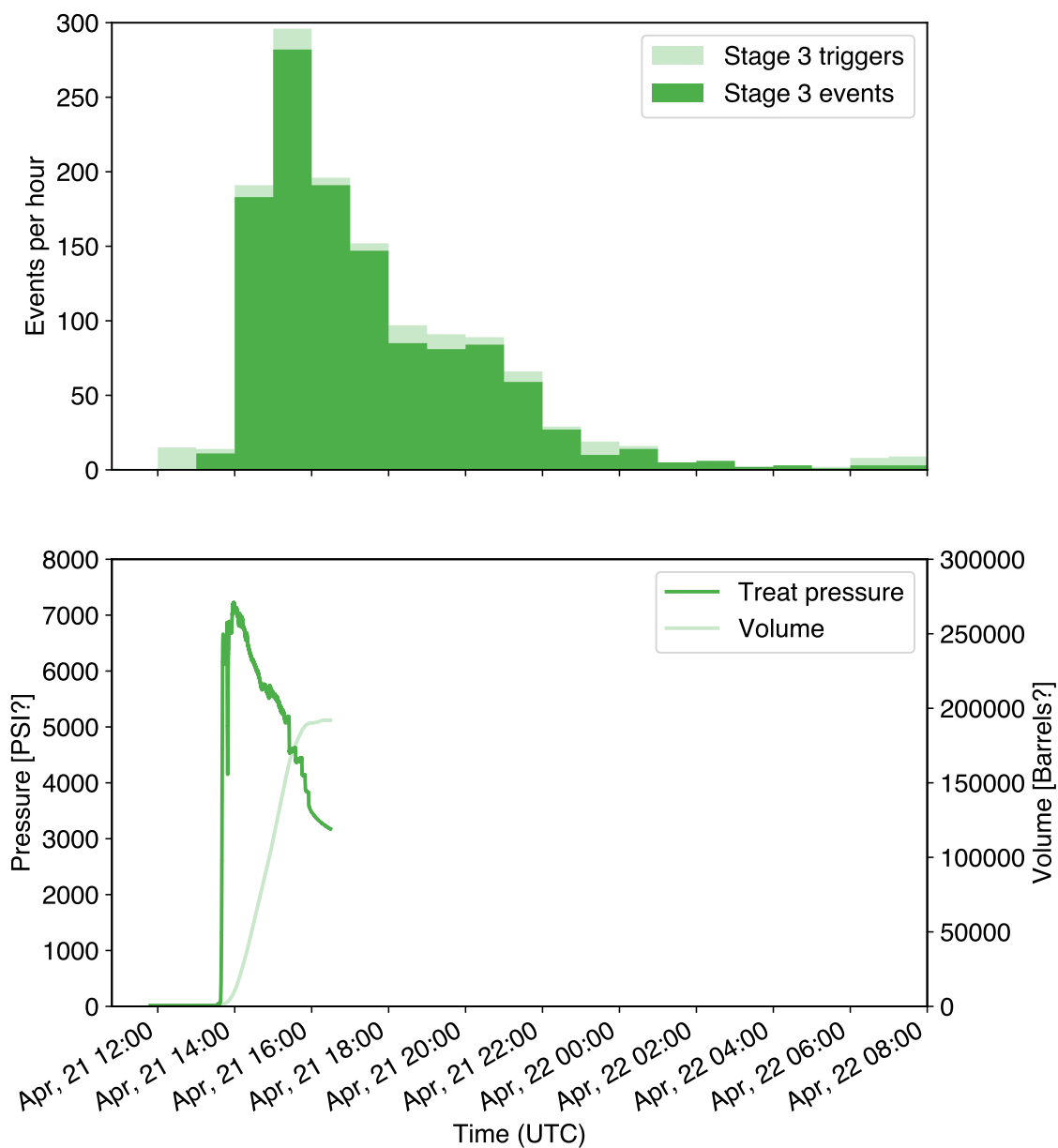


Figure 15: Top: triggered and verified microseismic events during stage 3. Bottom: well stimulation conditions for treatment pressure and cumulative fluid volume during stage 3.

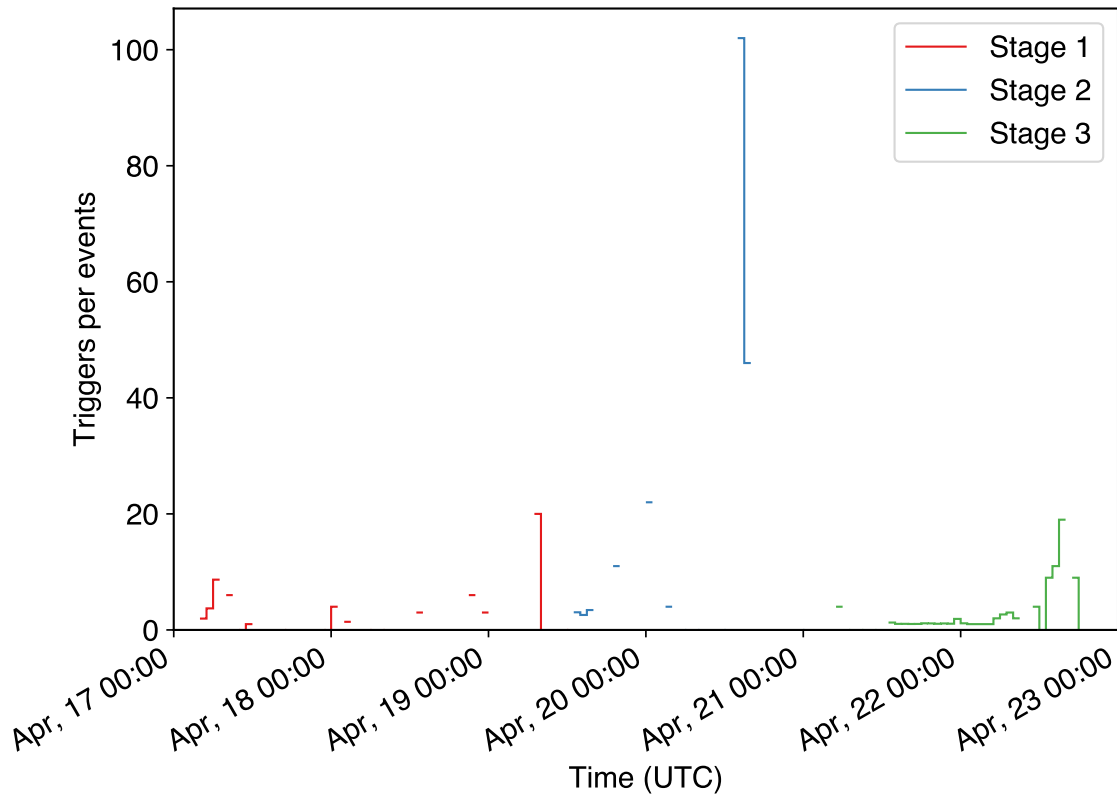


Figure 16: Hourly ratio of total triggers to verified triggers during stages 1-3. A lower ratio indicates fewer false triggers.

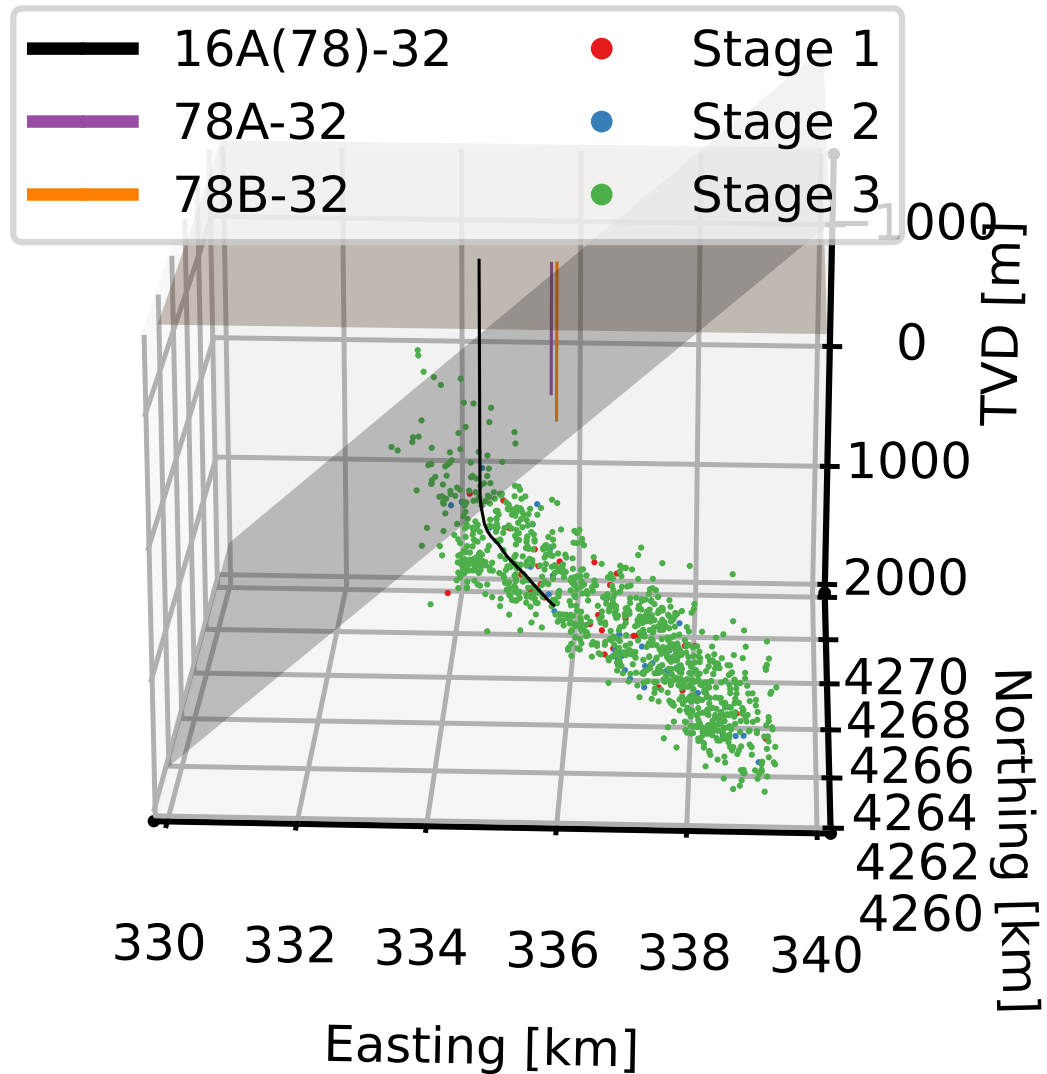


Figure 17: Event locations during stimulation of well 16A(78)-32 (black) for stages 1 (red), 2 (blue) and 3 (green). Observation wells 78A-32 and 78B-32 are shown in purple and orange, respectively. The brown plane is the approximate ground level and the grey plane shows the top of the granite formation as described by the velocity model used for event detection.

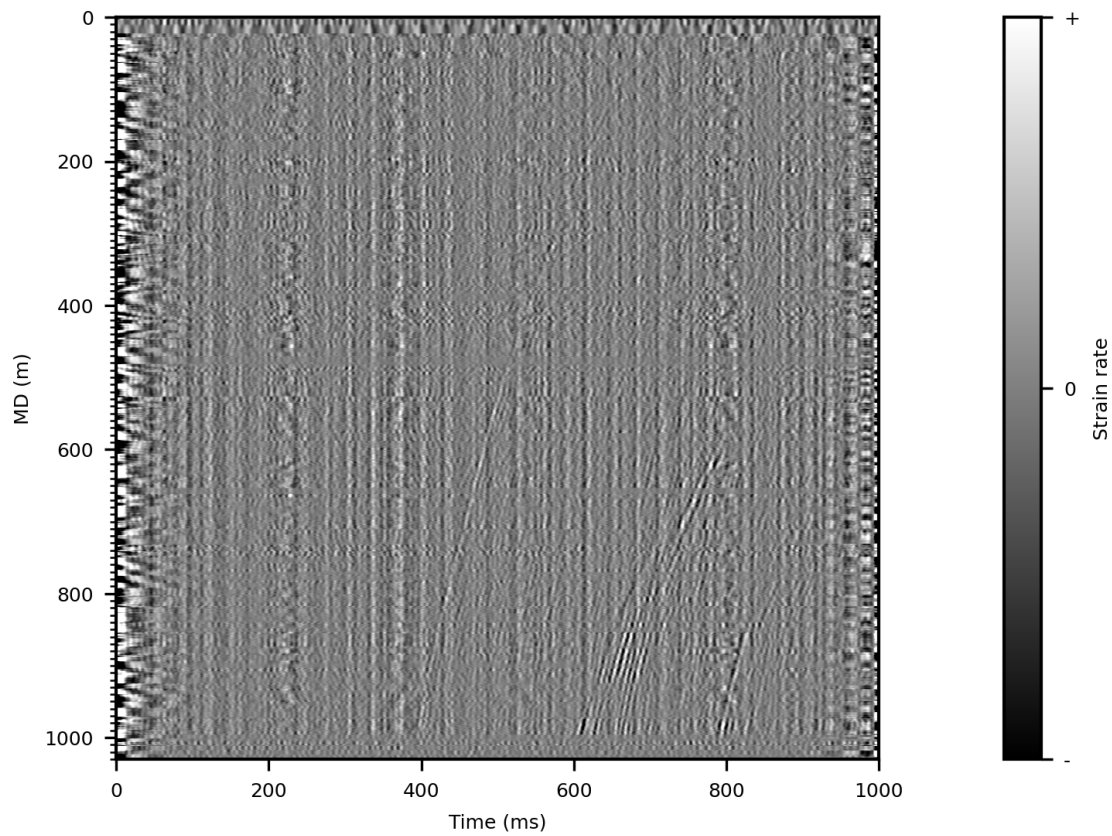


Figure 18: Microseismic event detected at April 17, 2022 05:04:02 (UTC) during stage 1, recorded in well 78A-32.

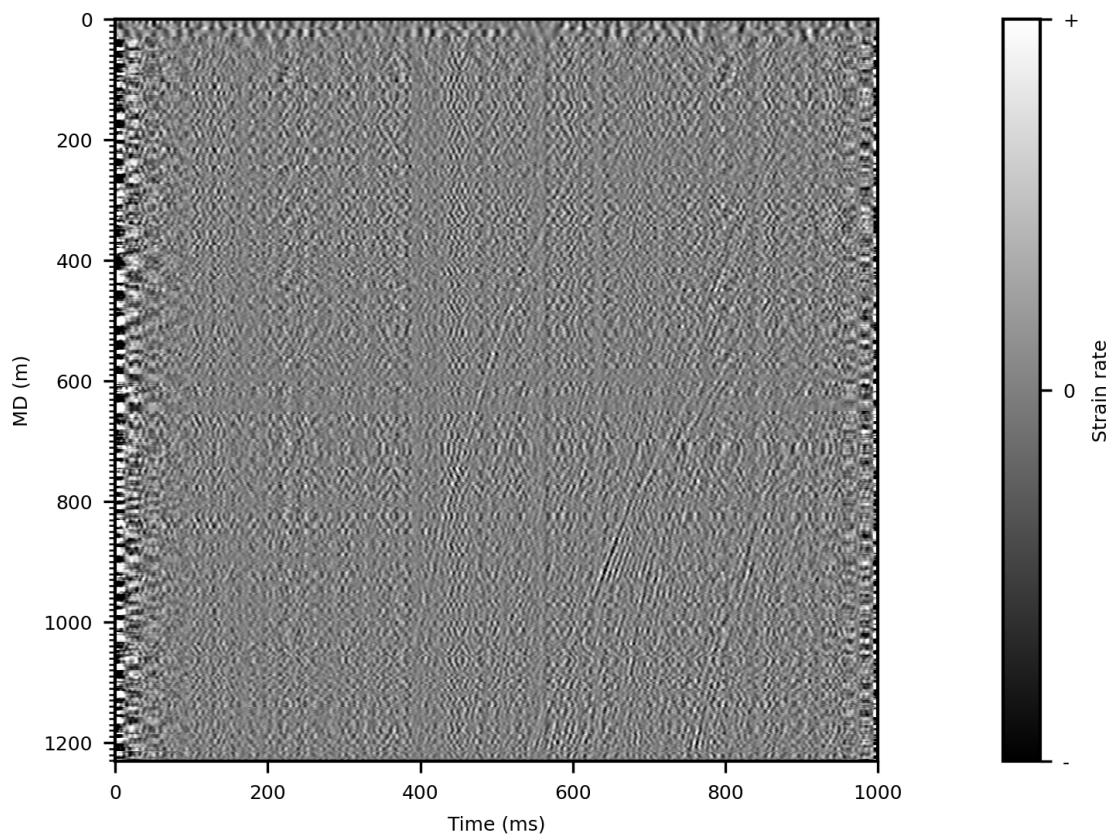


Figure 19: Microseismic event detected at April 17, 2022 05:04:02 (UTC) during stage 1, recorded in well 78B-32.

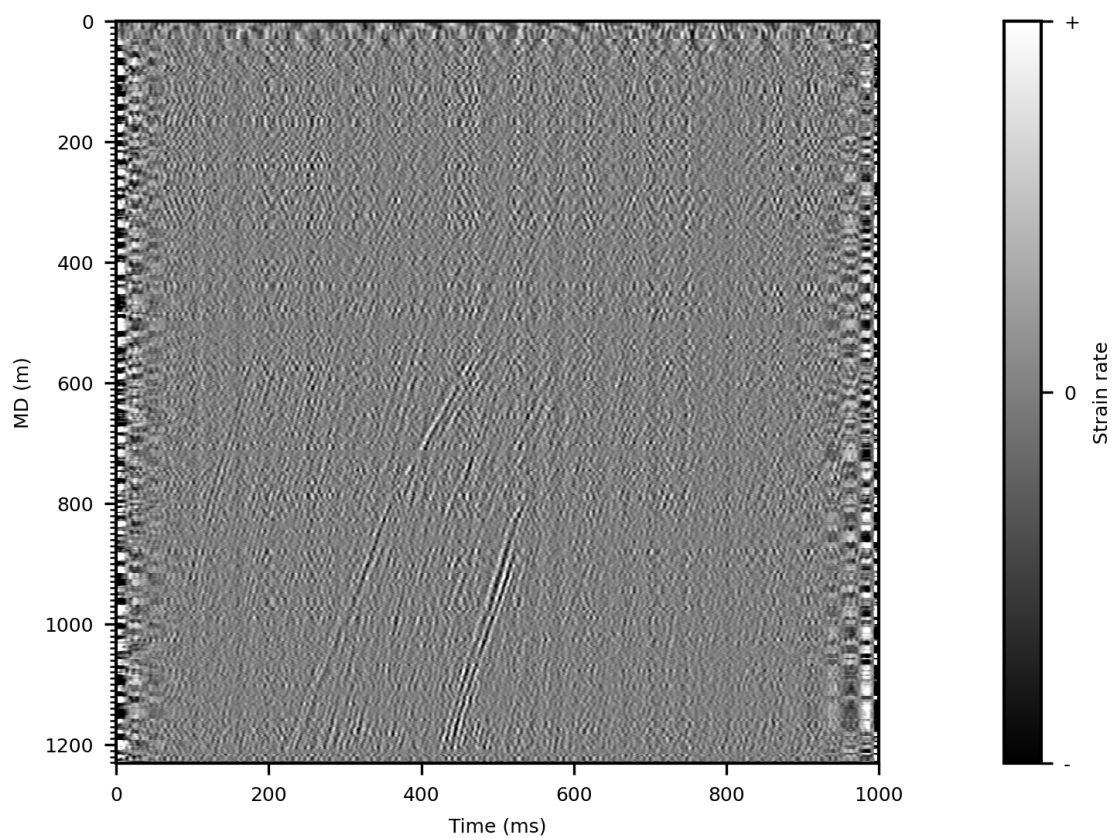


Figure 20: Microseismic event detected at April 19, 2022 13:55:34 (UTC) during stage 2, recorded in well 78A-32.

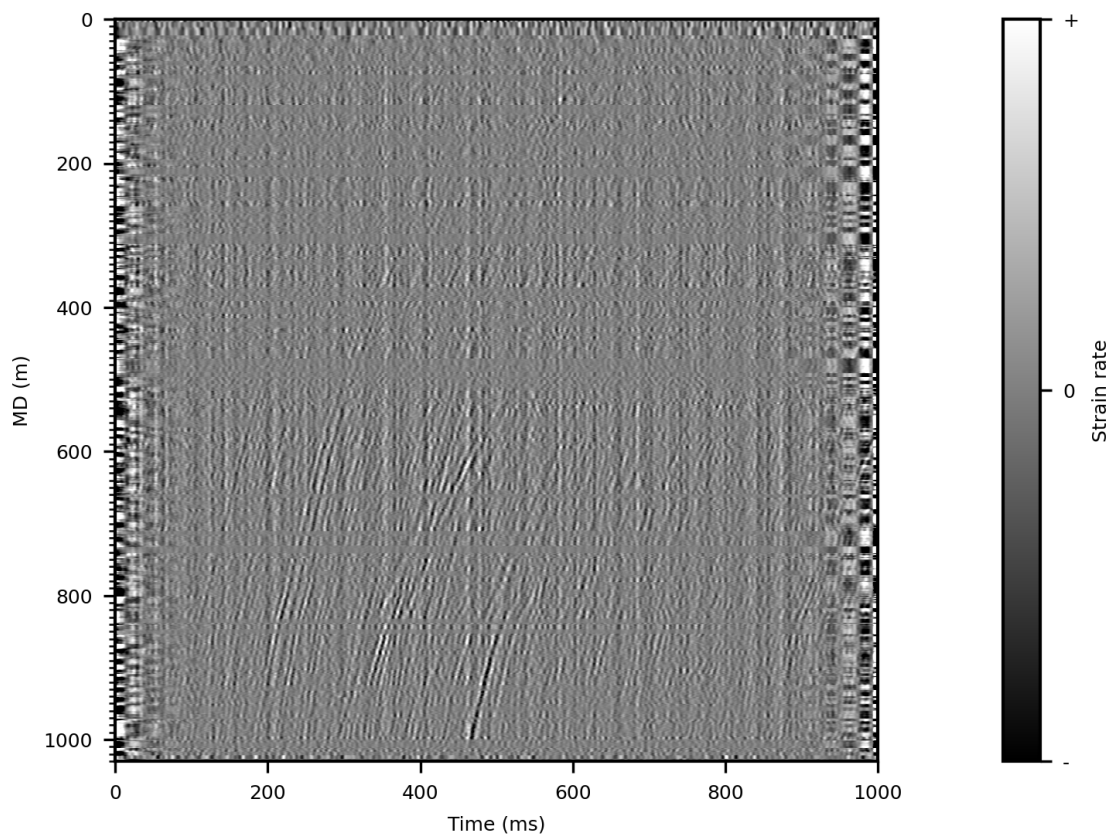


Figure 21: Microseismic event detected at April 19, 2022 13:55:34 (UTC) during stage 2, recorded in well 78B-32.

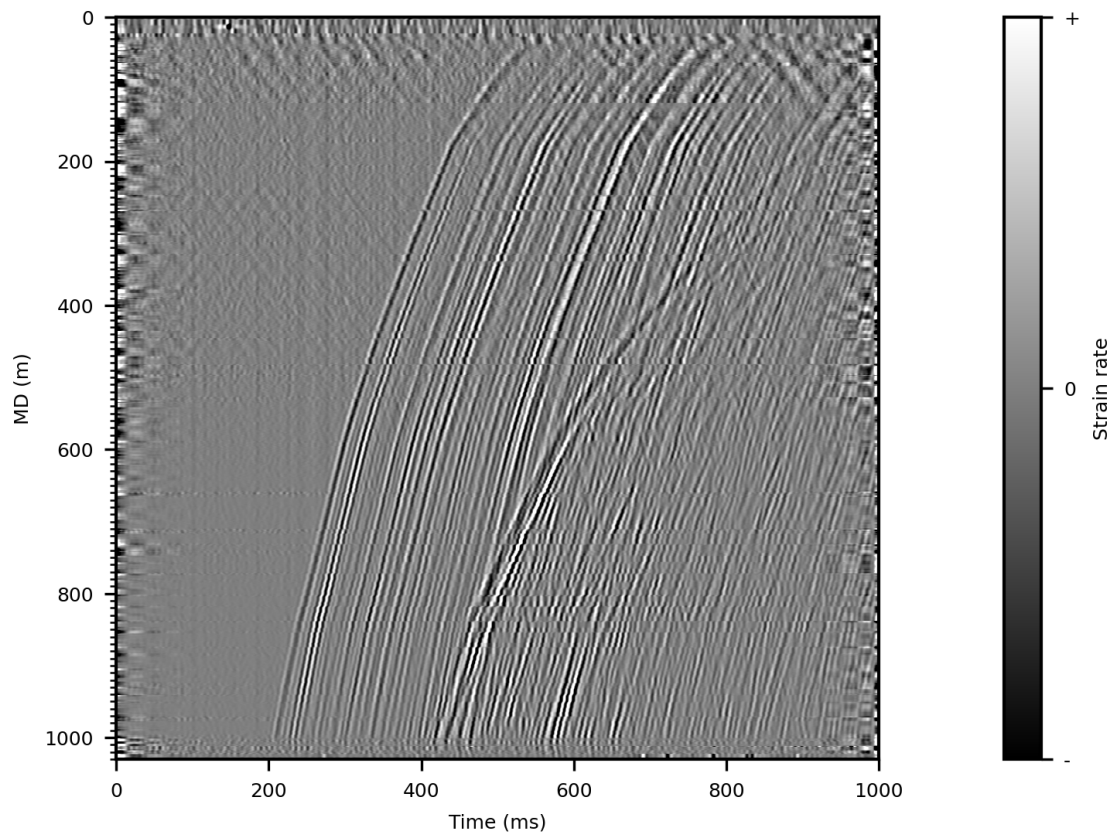


Figure 22: Microseismic event detected at April 21, 2022 14:13:02 (UTC) during stage 3, recorded in well 78A-32.

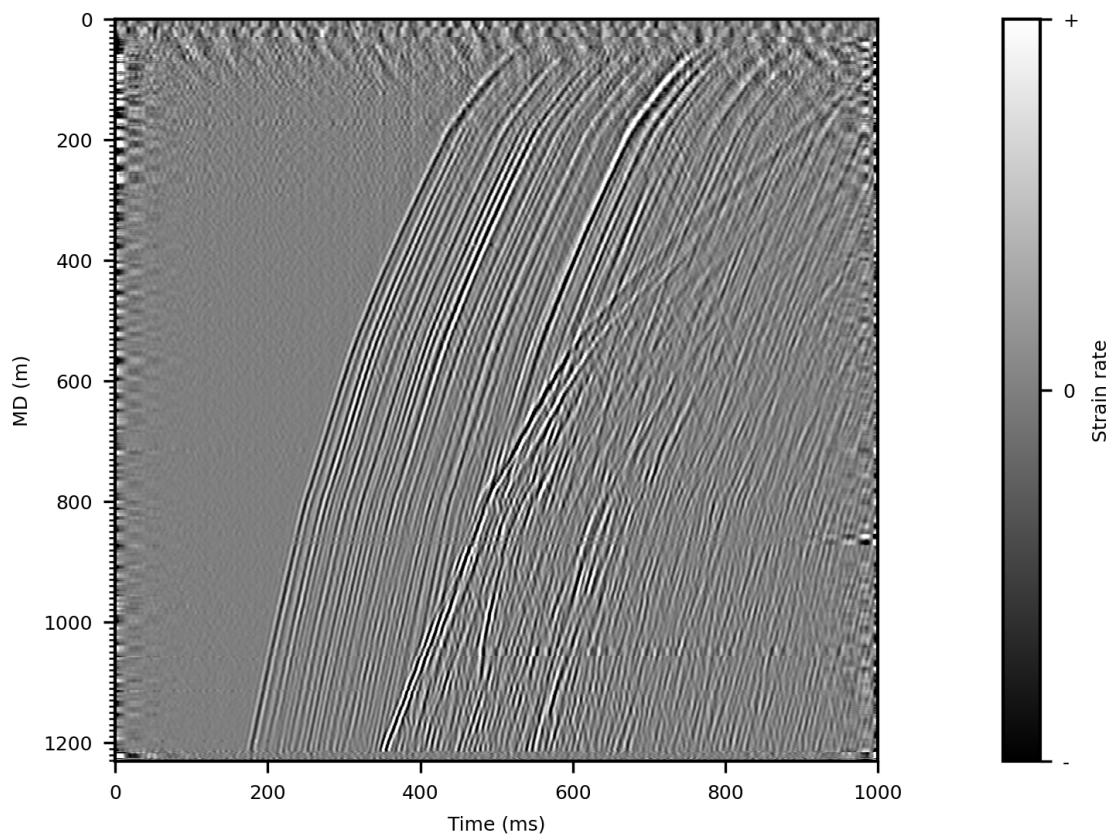


Figure 23: Microseismic event detected at April 21, 2022 14:13:02 (UTC) during stage 3, recorded in well 78B-32.

Catalog of events

Event	Time (UTC)	SNR	Easting (m)	Northing (m)	TVD (m)
1	2022-04-17T04:03:26.805000Z	2.867	337906.1	4262890.5	-1215.8
2	2022-04-17T04:12:06.405000Z	2.351	336545.5	4262543.5	-922.0
3	2022-04-17T04:17:10.452000Z	2.360	337108.5	4262412.0	-1056.4
4	2022-04-17T04:17:35.580000Z	1.990	336817.5	4263190.0	-708.2
5	2022-04-17T04:17:49.849000Z	2.802	337739.3	4262306.5	-1574.1
6	2022-04-17T04:20:04.510000Z	2.188	336651.7	4262509.0	-1224.2
7	2022-04-17T04:21:18.508000Z	3.612	334476.2	4263609.5	-172.5
8	2022-04-17T04:23:32.675000Z	3.411	337041.8	4262422.5	-1181.9
9	2022-04-17T04:23:33.244000Z	3.790	330368.3	4264798.0	-727.8
10	2022-04-17T04:24:44.876000Z	N/A	N/A	N/A	N/A
11	2022-04-17T04:25:24.064000Z	1.997	336784.2	4262568.0	-1186.7
12	2022-04-17T04:27:11.202000Z	N/A	N/A	N/A	N/A
13	2022-04-17T04:27:20.398000Z	2.352	337171.3	4262480.0	-1063.4
14	2022-04-17T04:27:21.215000Z	2.403	336977.3	4262520.5	-941.3
15	2022-04-17T04:28:31.783000Z	2.831	335004.5	4263664.5	-230.6
16	2022-04-17T04:28:40.482000Z	3.213	337885.7	4262138.0	-1429.3
17	2022-04-17T04:31:12.188000Z	N/A	N/A	N/A	N/A
18	2022-04-17T04:37:17.132000Z	N/A	N/A	N/A	N/A
19	2022-04-17T04:42:43.304000Z	3.141	337458.5	4262394.0	-1342.2
20	2022-04-17T04:42:44.276000Z	N/A	N/A	N/A	N/A
21	2022-04-17T04:50:05.633000Z	2.520	338734.2	4262542.0	-1679.0
22	2022-04-17T04:50:36.819000Z	2.726	336415.7	4262567.5	-998.8
23	2022-04-17T04:56:07.738000Z	N/A	N/A	N/A	N/A
24	2022-04-17T05:04:02.373000Z	3.850	337508.6	4262299.5	-1437.7
25	2022-04-17T05:05:59.158000Z	2.191	336478.9	4262655.5	-529.9
26	2022-04-17T05:08:36.860000Z	N/A	N/A	N/A	N/A
27	2022-04-17T05:09:54.789000Z	2.574	335462.6	4262932.5	-801.7
28	2022-04-17T05:13:45.252000Z	2.307	335903.0	4263516.0	-677.4
29	2022-04-17T05:46:02.697000Z	2.871	335528.4	4263014.5	-498.2
30	2022-04-17T05:51:14.090000Z	N/A	N/A	N/A	N/A
31	2022-04-17T06:13:12.698000Z	2.668	336605.7	4262523.0	-1037.3
32	2022-04-17T06:42:27.957000Z	N/A	N/A	N/A	N/A
33	2022-04-17T06:46:56.871000Z	2.976	339201.3	4261924.0	-1757.6
34	2022-04-17T08:55:08.577000Z	2.826	336726.2	4262692.0	-712.4
36	2022-04-18T00:44:14.991000Z	N/A	N/A	N/A	N/A
37	2022-04-18T02:31:13.010000Z	3.483	334115.3	4263870.0	-1007.8
38	2022-04-18T02:31:14.334000Z	N/A	N/A	N/A	N/A
39	2022-04-18T02:34:54.930000Z	2.909	335691.8	4262762.5	-830.0
40	2022-04-18T02:34:55.609000Z	3.492	335616.5	4263187.5	-802.0

41	2022-04-18T02:34:56.574000Z	2.911	338077.9	4262115.0	-1073.6
42	2022-04-18T13:02:04.262000Z	2.608	335108.5	4263642.5	-444.3
43	2022-04-18T21:22:11.202000Z	2.679	335288.8	4263599.5	-800.4
44	2022-04-18T23:58:01.806000Z	2.838	335596.3	4262784.5	-588.8
45	2022-04-19T07:47:31.942000Z	N/A	N/A	N/A	N/A
46	2022-04-19T13:44:52.455000Z	2.912	336929.8	4262431.0	-1217.4
47	2022-04-19T13:45:43.626000Z	2.831	335545.9	4263516.5	-230.1
48	2022-04-19T13:46:05.594000Z	3.146	335761.7	4262743.0	-802.2
49	2022-04-19T13:46:07.594000Z	4.990	338727.8	4262784.0	-1904.4
50	2022-04-19T13:47:39.391000Z	2.216	336972.5	4262524.0	-1348.5
51	2022-04-19T13:48:24.565000Z	2.492	337055.5	4262403.5	-1394.0
52	2022-04-19T13:49:17.618000Z	2.321	338857.1	4262224.5	-1788.2
53	2022-04-19T13:50:01.094000Z	2.986	335832.2	4263259.0	-1026.3
54	2022-04-19T13:50:40.113000Z	N/A	N/A	N/A	N/A
55	2022-04-19T13:51:20.378000Z	N/A	N/A	N/A	N/A
56	2022-04-19T13:51:48.385000Z	2.100	337239.9	4262373.0	-1132.3
57	2022-04-19T13:52:31.702000Z	2.493	338125.2	4262206.0	-1459.7
58	2022-04-19T13:52:38.555000Z	N/A	N/A	N/A	N/A
59	2022-04-19T13:53:13.807000Z	2.094	329875.8	4264625.0	-562.5
60	2022-04-19T13:53:40.055000Z	2.469	337664.2	4262855.5	-1247.2
61	2022-04-19T13:53:59.912000Z	2.425	336652.7	4263218.5	-918.0
62	2022-04-19T13:54:41.472000Z	N/A	N/A	N/A	N/A
63	2022-04-19T13:55:19.111000Z	N/A	N/A	N/A	N/A
64	2022-04-19T13:55:34.553000Z	3.467	338115.1	4262121.5	-1486.7
65	2022-04-19T13:56:16.464000Z	3.589	335770.1	4263456.0	-556.3
66	2022-04-19T13:57:26.523000Z	2.007	336808.5	4262670.0	-1219.7
67	2022-04-19T13:58:22.428000Z	N/A	N/A	N/A	N/A
68	2022-04-19T13:58:26.923000Z	3.118	337692.3	4262924.5	-1443.6
69	2022-04-19T13:59:29.330000Z	N/A	N/A	N/A	N/A
70	2022-04-19T14:00:37.039000Z	2.598	337265.5	4262443.5	-1044.6
71	2022-04-19T14:01:29.360000Z	2.587	336865.0	4262487.0	-1199.6
72	2022-04-19T14:02:24.335000Z	3.480	334163.5	4263892.0	-313.2
73	2022-04-19T14:03:58.981000Z	2.171	337279.7	4262439.0	-1465.1
74	2022-04-19T14:05:34.156000Z	2.953	337406.8	4262296.0	-1248.0
75	2022-04-19T14:08:54.774000Z	2.171	335469.1	4262924.5	-619.4
76	2022-04-19T14:10:21.865000Z	N/A	N/A	N/A	N/A
77	2022-04-19T14:13:11.867000Z	2.982	337820.9	4262602.5	-986.6
78	2022-04-19T14:14:07.714000Z	3.314	337636.3	4262341.0	-1309.1
79	2022-04-19T14:14:56.729000Z	N/A	N/A	N/A	N/A
80	2022-04-19T14:18:59.769000Z	2.041	336859.1	4262485.5	-1258.3
81	2022-04-19T14:20:23.635000Z	2.056	337789.5	4262302.5	-1281.5
82	2022-04-19T14:21:21.336000Z	2.547	334352.6	4263548.0	-227.3
83	2022-04-19T14:24:39.618000Z	2.299	336268.0	4263342.5	-829.5

84	2022-04-19T14:25:43.230000Z	2.100	335500.2	4262917.5	-287.3
85	2022-04-19T14:30:58.611000Z	N/A	N/A	N/A	N/A
86	2022-04-19T14:47:47.946000Z	1.965	339096.9	4262371.5	-2030.6
87	2022-04-19T14:51:12.845000Z	N/A	N/A	N/A	N/A
88	2022-04-19T14:55:15.636000Z	N/A	N/A	N/A	N/A
89	2022-04-19T15:12:05.831000Z	N/A	N/A	N/A	N/A
90	2022-04-19T15:12:10.613000Z	2.306	336877.0	4262574.0	-1076.6
91	2022-04-19T15:19:06.561000Z	N/A	N/A	N/A	N/A
92	2022-04-19T15:23:48.635000Z	2.906	334677.1	4263545.0	40.2
93	2022-04-19T15:24:21.001000Z	2.064	336778.1	4262576.5	-1248.9
94	2022-04-19T15:28:07.814000Z	1.901	338431.7	4262658.5	-1315.4
95	2022-04-19T15:35:45.041000Z	2.511	335806.4	4263244.0	-741.9
96	2022-04-19T19:03:33.085000Z	2.727	334780.1	4263841.0	-470.1
97	2022-04-20T00:00:39.517000Z	2.214	330098.7	4265098.0	-894.6
98	2022-04-20T03:17:59.801000Z	N/A	N/A	N/A	N/A
99	2022-04-20T14:50:48.827000Z	2.538	338528.0	4262096.0	-1766.8
100	2022-04-20T15:00:40.600000Z	3.513	337292.8	4262310.5	-1274.0
101	2022-04-20T15:00:41.695000Z	3.382	330084.5	4264951.0	-892.2
102	2022-04-21T05:56:37.929000Z	2.679	338076.4	4262330.0	-1312.4
103	2022-04-21T13:35:37.613000Z	4.717	334734.3	4263426.5	-676.3
104	2022-04-21T13:35:38.190000Z	3.012	334855.2	4263096.5	-623.0
105	2022-04-21T13:35:40.221000Z	4.769	338065.2	4262347.0	-1400.1
106	2022-04-21T13:35:41.613000Z	3.800	335226.8	4262880.5	-590.5
107	2022-04-21T13:35:43.579000Z	4.325	337265.3	4262441.0	-1344.6
108	2022-04-21T13:35:45.831000Z	3.751	338013.6	4262966.5	-1669.6
109	2022-04-21T13:35:46.598000Z	4.427	333830.5	4263882.5	-1097.8
110	2022-04-21T13:35:47.462000Z	3.211	334041.1	4263511.5	-643.4
111	2022-04-21T13:35:48.221000Z	3.749	335891.0	4263102.5	-1079.8
112	2022-04-21T13:35:49.116000Z	3.387	334743.0	4263729.0	-1278.0
113	2022-04-21T13:35:49.813000Z	3.293	339144.5	4262554.5	-2081.4
114	2022-04-21T14:00:56.193000Z	1.998	337597.6	4262974.5	-1517.6
115	2022-04-21T14:02:03.855000Z	4.526	334540.6	4263892.0	-773.6
116	2022-04-21T14:02:36.075000Z	N/A	N/A	N/A	N/A
117	2022-04-21T14:04:14.582000Z	N/A	N/A	N/A	N/A
118	2022-04-21T14:04:29.698000Z	2.413	338796.6	4262040.5	-1733.2
119	2022-04-21T14:04:39.839000Z	3.743	334357.3	4263223.5	-742.1
120	2022-04-21T14:05:03.091000Z	2.724	338621.7	4262101.0	-1541.0
121	2022-04-21T14:05:30.362000Z	2.627	334150.9	4263192.5	121.7
122	2022-04-21T14:06:20.960000Z	2.709	337609.6	4262554.0	-1005.9
123	2022-04-21T14:07:15.194000Z	3.187	337998.8	4262873.5	-1612.4
124	2022-04-21T14:07:48.281000Z	2.853	335496.5	4262812.5	-264.9
125	2022-04-21T14:07:49.211000Z	3.114	334471.2	4263712.5	-652.2
126	2022-04-21T14:08:47.850000Z	3.171	337784.3	4262834.5	-952.6

127	2022-04-21T14:09:47.459000Z	2.686	337244.8	4262353.5	-1014.3
128	2022-04-21T14:10:30.077000Z	2.298	334556.2	4263271.0	583.6
129	2022-04-21T14:11:36.707000Z	N/A	N/A	N/A	N/A
130	2022-04-21T14:11:51.160000Z	4.152	337268.9	4262446.0	-1430.0
131	2022-04-21T14:12:04.439000Z	2.057	337331.8	4262303.0	-1391.8
132	2022-04-21T14:12:11.929000Z	N/A	N/A	N/A	N/A
133	2022-04-21T14:12:25.375000Z	N/A	N/A	N/A	N/A
134	2022-04-21T14:13:02.546000Z	9.413	338271.3	4262283.5	-1634.8
135	2022-04-21T14:13:10.769000Z	2.548	337648.8	4262337.0	-1071.2
136	2022-04-21T14:13:57.402000Z	2.158	329975.1	4265009.5	-464.3
137	2022-04-21T14:14:18.546000Z	3.537	334439.6	4263489.5	-564.0
138	2022-04-21T14:15:04.762000Z	3.276	338255.7	4262797.5	-1577.0
139	2022-04-21T14:15:05.564000Z	2.518	330318.6	4264719.0	-917.2
140	2022-04-21T14:15:29.021000Z	3.642	334409.9	4263410.0	-654.0
141	2022-04-21T14:15:40.496000Z	N/A	N/A	N/A	N/A
142	2022-04-21T14:16:39.421000Z	N/A	N/A	N/A	N/A
143	2022-04-21T14:16:48.947000Z	2.802	339355.2	4262495.0	-1458.6
144	2022-04-21T14:16:53.427000Z	4.227	338124.7	4262220.5	-1730.4
145	2022-04-21T14:17:00.332000Z	4.751	334399.1	4263216.5	-687.2
146	2022-04-21T14:17:05.225000Z	2.405	335923.3	4262804.0	-784.2
147	2022-04-21T14:18:05.710000Z	1.984	336182.9	4262941.0	-921.9
148	2022-04-21T14:18:06.535000Z	2.148	337637.9	4262236.5	-1186.9
149	2022-04-21T14:18:19.099000Z	2.242	334645.8	4263240.0	-134.7
150	2022-04-21T14:19:07.843000Z	N/A	N/A	N/A	N/A
151	2022-04-21T14:19:33.775000Z	1.925	336481.2	4262601.5	-662.3
152	2022-04-21T14:19:52.390000Z	2.340	329976.1	4264993.5	-343.1
153	2022-04-21T14:20:25.843000Z	3.559	337712.5	4262945.5	-1214.1
154	2022-04-21T14:20:32.596000Z	1.944	337035.1	4262705.5	-1243.3
155	2022-04-21T14:20:33.419000Z	1.933	335913.4	4262807.5	-802.7
156	2022-04-21T14:20:35.788000Z	N/A	N/A	N/A	N/A
157	2022-04-21T14:20:40.385000Z	3.371	335957.5	4263415.5	-682.8
158	2022-04-21T14:21:11.576000Z	11.597	334351.2	4263123.5	-714.0
159	2022-04-21T14:21:36.151000Z	2.076	337226.5	4263088.5	-1047.9
160	2022-04-21T14:21:47.379000Z	2.211	338016.6	4262868.0	-1904.8
161	2022-04-21T14:21:58.294000Z	2.108	338786.6	4262348.5	-1402.1
162	2022-04-21T14:22:44.183000Z	N/A	N/A	N/A	N/A
163	2022-04-21T14:22:49.070000Z	3.109	337960.3	4262260.5	-1784.0
164	2022-04-21T14:23:15.454000Z	2.775	337762.7	4262423.0	-1245.8
165	2022-04-21T14:24:22.960000Z	2.806	338278.2	4262400.0	-1411.1
166	2022-04-21T14:24:25.099000Z	3.296	338346.2	4262267.5	-1790.9
167	2022-04-21T14:24:36.293000Z	2.894	335743.2	4263582.5	-611.4
168	2022-04-21T14:24:38.522000Z	3.407	335913.3	4262797.0	-826.2
169	2022-04-21T14:25:27.502000Z	N/A	N/A	N/A	N/A

170	2022-04-21T14:26:06.663000Z	3.673	335210.5	4263713.5	-742.2
171	2022-04-21T14:26:12.890000Z	2.814	338298.5	4262067.0	-1605.4
172	2022-04-21T14:26:53.705000Z	4.159	335215.9	4263717.0	-769.6
173	2022-04-21T14:27:24.398000Z	4.293	334388.8	4263248.0	-682.0
174	2022-04-21T14:27:47.608000Z	2.386	337536.0	4262995.5	-587.3
175	2022-04-21T14:28:03.385000Z	4.686	334593.8	4263770.5	-720.7
176	2022-04-21T14:28:23.297000Z	2.815	337971.4	4262390.5	-1012.0
177	2022-04-21T14:28:32.521000Z	N/A	N/A	N/A	N/A
178	2022-04-21T14:29:14.635000Z	2.306	338584.2	4262616.0	-1312.1
179	2022-04-21T14:29:30.218000Z	N/A	N/A	N/A	N/A
180	2022-04-21T14:29:34.637000Z	5.097	334371.4	4263227.5	-647.5
181	2022-04-21T14:29:35.570000Z	2.406	336716.7	4262592.0	-1285.4
182	2022-04-21T14:30:14.862000Z	N/A	N/A	N/A	N/A
183	2022-04-21T14:30:37.826000Z	3.294	334631.4	4263773.5	-722.3
184	2022-04-21T14:30:48.645000Z	3.442	337846.6	4262704.5	-1335.6
185	2022-04-21T14:30:51.691000Z	4.446	337652.9	4263058.0	-1276.1
186	2022-04-21T14:31:28.514000Z	N/A	N/A	N/A	N/A
187	2022-04-21T14:31:36.309000Z	2.663	335137.8	4263628.0	-442.6
188	2022-04-21T14:32:31.840000Z	1.907	333341.3	4263603.0	158.1
189	2022-04-21T14:32:33.397000Z	3.055	338307.5	4262021.0	-1505.9
190	2022-04-21T14:32:35.270000Z	5.265	334396.1	4263280.0	-647.4
191	2022-04-21T14:32:44.739000Z	2.461	337793.3	4262947.0	-1229.4
192	2022-04-21T14:33:19.821000Z	3.603	338083.2	4262802.0	-1387.9
193	2022-04-21T14:33:24.612000Z	2.163	336788.0	4262578.5	-1096.5
194	2022-04-21T14:33:25.997000Z	2.495	335080.9	4262927.0	-648.1
195	2022-04-21T14:34:01.386000Z	N/A	N/A	N/A	N/A
196	2022-04-21T14:34:38.525000Z	1.912	337753.8	4262315.5	-1709.2
197	2022-04-21T14:34:46.912000Z	N/A	N/A	N/A	N/A
198	2022-04-21T14:35:32.961000Z	2.515	336566.0	4262524.0	-948.1
199	2022-04-21T14:35:54.138000Z	2.835	336886.4	4262546.5	-534.6
200	2022-04-21T14:35:54.398000Z	2.854	337347.2	4262291.5	-1091.9
201	2022-04-21T14:36:26.532000Z	3.553	335498.8	4263650.5	-532.9
202	2022-04-21T14:36:29.224000Z	2.150	337728.6	4262213.0	-888.3
203	2022-04-21T14:36:40.639000Z	1.911	336947.3	4262419.0	-1188.6
204	2022-04-21T14:37:06.734000Z	3.794	335202.1	4263206.5	-741.6
205	2022-04-21T14:37:09.398000Z	3.110	335085.1	4263648.0	-258.3
206	2022-04-21T14:37:40.098000Z	2.719	334792.0	4263317.0	74.1
207	2022-04-21T14:37:51.392000Z	N/A	N/A	N/A	N/A
208	2022-04-21T14:38:01.512000Z	2.672	336263.4	4263326.0	-465.1
209	2022-04-21T14:38:09.398000Z	7.434	335375.8	4263585.0	-958.1
210	2022-04-21T14:38:34.581000Z	N/A	N/A	N/A	N/A
211	2022-04-21T14:39:11.357000Z	3.100	335280.2	4263077.5	-438.9
212	2022-04-21T14:39:16.205000Z	2.683	338219.2	4262815.5	-1488.6

213	2022-04-21T14:39:43.394000Z	2.248	337709.8	4262216.0	-1276.2
214	2022-04-21T14:39:46.517000Z	2.872	337139.0	4262372.0	-1216.8
215	2022-04-21T14:39:55.671000Z	6.678	334346.2	4263112.0	-743.8
216	2022-04-21T14:40:43.162000Z	7.185	334450.1	4263430.5	-739.6
217	2022-04-21T14:41:18.904000Z	2.779	336507.5	4262639.0	-705.9
218	2022-04-21T14:41:21.929000Z	2.522	336120.7	4262857.0	-1100.4
219	2022-04-21T14:41:27.743000Z	3.642	334749.9	4263041.5	-860.5
220	2022-04-21T14:41:34.905000Z	3.111	337592.7	4262672.5	-1911.5
221	2022-04-21T14:41:39.398000Z	3.112	335068.9	4263684.5	-752.3
222	2022-04-21T14:41:49.651000Z	N/A	N/A	N/A	N/A
223	2022-04-21T14:42:11.532000Z	2.550	336247.4	4263364.0	-715.2
224	2022-04-21T14:42:27.357000Z	6.758	338167.0	4262196.5	-1704.9
225	2022-04-21T14:43:16.711000Z	2.138	336319.3	4262698.0	-711.3
226	2022-04-21T14:43:35.365000Z	2.505	336137.4	4262948.0	-741.9
227	2022-04-21T14:44:25.342000Z	2.353	338036.6	4262747.0	-1701.1
228	2022-04-21T14:44:49.106000Z	3.384	334064.1	4263588.5	-251.3
229	2022-04-21T14:44:54.749000Z	2.207	335195.4	4263639.0	-344.0
230	2022-04-21T14:45:01.245000Z	5.523	338559.2	4262713.5	-1889.9
231	2022-04-21T14:45:07.051000Z	3.297	334909.8	4263706.5	-319.2
232	2022-04-21T14:45:52.293000Z	3.677	334822.7	4263047.5	-674.2
233	2022-04-21T14:46:11.906000Z	1.908	335802.7	4263552.5	-562.2
234	2022-04-21T14:46:15.637000Z	2.611	334687.8	4263028.5	-141.5
235	2022-04-21T14:46:21.413000Z	2.817	334526.7	4263797.5	-258.9
236	2022-04-21T14:46:30.967000Z	2.204	337634.3	4262410.0	-1065.6
237	2022-04-21T14:46:56.688000Z	2.418	338121.1	4262935.0	-1638.1
238	2022-04-21T14:47:10.949000Z	2.016	338304.1	4262900.5	-1333.8
239	2022-04-21T14:48:13.628000Z	4.298	338211.2	4262189.0	-1788.7
240	2022-04-21T14:48:20.765000Z	4.092	335086.7	4263549.5	-861.5
241	2022-04-21T14:48:32.223000Z	3.216	335274.6	4263574.0	-274.5
242	2022-04-21T14:48:51.758000Z	N/A	N/A	N/A	N/A
243	2022-04-21T14:48:59.986000Z	2.753	335688.4	4263486.5	-622.5
244	2022-04-21T14:49:00.787000Z	3.969	334446.8	4263206.0	-674.0
245	2022-04-21T14:49:05.885000Z	3.716	334626.3	4263777.0	-769.3
246	2022-04-21T14:49:12.293000Z	2.183	336850.8	4262445.5	-919.5
247	2022-04-21T14:49:44.117000Z	3.471	336334.0	4263308.0	-1193.3
248	2022-04-21T14:49:54.925000Z	2.017	336079.1	4263413.5	-806.6
249	2022-04-21T14:50:23.956000Z	2.417	330017.4	4264333.5	-466.4
250	2022-04-21T14:50:29.663000Z	4.113	334332.8	4263127.0	-716.6
251	2022-04-21T14:50:36.278000Z	3.693	334169.3	4263684.5	-190.2
252	2022-04-21T14:50:47.542000Z	2.496	329920.8	4264819.5	-744.0
253	2022-04-21T14:50:56.641000Z	2.257	335416.3	4262838.5	-829.3
254	2022-04-21T14:51:00.214000Z	3.019	338006.4	4262794.5	-1361.4
255	2022-04-21T14:51:02.432000Z	3.356	337503.7	4262501.5	-1361.4

256	2022-04-21T14:51:05.749000Z	4.466	334462.2	4263507.0	-712.0
257	2022-04-21T14:51:14.481000Z	N/A	N/A	N/A	N/A
258	2022-04-21T14:51:20.959000Z	2.983	335887.9	4263228.0	-565.3
259	2022-04-21T14:51:44.446000Z	1.906	335625.2	4263531.0	-867.2
260	2022-04-21T14:52:02.536000Z	N/A	N/A	N/A	N/A
261	2022-04-21T14:52:18.667000Z	2.155	338453.1	4262659.5	-1789.5
262	2022-04-21T14:52:20.328000Z	2.020	336374.6	4262576.5	-765.8
263	2022-04-21T14:52:28.096000Z	2.845	337320.5	4262323.0	-867.1
264	2022-04-21T14:52:29.874000Z	3.325	337988.3	4262248.5	-1311.1
265	2022-04-21T14:53:16.672000Z	N/A	N/A	N/A	N/A
266	2022-04-21T14:53:34.804000Z	11.870	338317.2	4262165.5	-1915.3
267	2022-04-21T14:53:45.092000Z	3.561	334800.0	4263308.0	-144.4
268	2022-04-21T14:53:55.765000Z	3.659	335304.0	4262966.5	-1128.6
269	2022-04-21T14:54:43.690000Z	3.534	338121.3	4262743.0	-1269.4
270	2022-04-21T14:54:46.258000Z	3.435	338048.4	4262647.0	-1248.8
271	2022-04-21T14:54:50.124000Z	N/A	N/A	N/A	N/A
272	2022-04-21T14:54:59.512000Z	3.496	334511.9	4263801.5	-524.9
273	2022-04-21T14:55:23.645000Z	2.182	337498.2	4262260.0	-828.2
274	2022-04-21T14:56:29.650000Z	2.110	337270.2	4262454.5	-1362.5
275	2022-04-21T14:56:30.500000Z	3.796	334536.1	4263794.5	-801.6
276	2022-04-21T14:56:38.876000Z	2.439	337073.4	4262423.0	-1203.9
277	2022-04-21T14:56:42.992000Z	3.258	338821.3	4262611.5	-1253.7
278	2022-04-21T14:57:11.457000Z	2.998	336605.2	4262533.5	-891.2
279	2022-04-21T14:57:15.990000Z	2.618	337585.4	4262350.0	-1156.1
280	2022-04-21T14:57:21.675000Z	N/A	N/A	N/A	N/A
281	2022-04-21T14:57:25.110000Z	3.132	338589.1	4262720.5	-1918.6
282	2022-04-21T14:57:25.931000Z	2.110	337140.0	4262370.0	-1220.6
283	2022-04-21T14:57:30.088000Z	2.649	337755.4	4262814.0	-1207.4
284	2022-04-21T14:58:03.504000Z	4.743	338550.4	4262721.0	-1666.9
285	2022-04-21T14:58:24.423000Z	3.879	334628.9	4263862.0	-734.5
286	2022-04-21T14:58:35.184000Z	2.664	338492.7	4262422.5	-1222.2
287	2022-04-21T14:58:37.559000Z	3.654	335129.7	4263019.5	-861.7
288	2022-04-21T14:58:45.299000Z	2.465	337673.1	4262949.5	-920.2
289	2022-04-21T14:59:03.536000Z	3.621	335508.2	4263027.0	-793.9
290	2022-04-21T14:59:06.615000Z	10.083	335107.8	4263561.0	-903.8
291	2022-04-21T14:59:33.982000Z	3.348	338322.4	4262147.5	-1703.0
292	2022-04-21T14:59:37.345000Z	2.990	335271.9	4263605.5	-134.6
293	2022-04-21T14:59:40.633000Z	13.250	338567.8	4262663.5	-2093.9
294	2022-04-21T14:59:43.622000Z	N/A	N/A	N/A	N/A
295	2022-04-21T14:59:55.134000Z	2.615	337246.7	4262750.5	-1069.5
296	2022-04-21T14:59:56.671000Z	2.743	334651.6	4263463.0	-84.9
297	2022-04-21T15:00:26.481000Z	3.770	338162.6	4262307.5	-1410.0
298	2022-04-21T15:00:36.663000Z	2.448	329908.3	4264407.0	-615.9

299	2022-04-21T15:00:43.667000Z	N/A	N/A	N/A	N/A
300	2022-04-21T15:00:47.549000Z	2.636	335408.8	4262873.5	-602.2
301	2022-04-21T15:01:00.432000Z	N/A	N/A	N/A	N/A
302	2022-04-21T15:01:28.700000Z	3.626	338474.6	4262735.5	-1735.0
303	2022-04-21T15:01:44.159000Z	3.014	337263.4	4263181.0	-1199.6
304	2022-04-21T15:01:45.648000Z	3.471	338805.3	4262032.0	-2154.0
305	2022-04-21T15:01:48.530000Z	2.969	336381.3	4262688.0	-834.5
306	2022-04-21T15:01:52.870000Z	3.859	338196.2	4262092.0	-1492.4
307	2022-04-21T15:02:54.620000Z	4.154	334590.9	4263772.5	-741.1
308	2022-04-21T15:03:08.558000Z	2.183	335885.4	4263434.5	-736.1
309	2022-04-21T15:03:35.315000Z	2.292	336062.5	4263085.5	-1281.9
310	2022-04-21T15:03:45.570000Z	2.966	337906.0	4262174.5	-1387.6
311	2022-04-21T15:03:48.523000Z	3.233	334420.5	4263404.0	-476.2
312	2022-04-21T15:03:50.134000Z	3.243	337068.3	4262505.0	-1196.6
313	2022-04-21T15:03:54.542000Z	3.450	338294.4	4262095.5	-1731.5
314	2022-04-21T15:04:34.926000Z	2.836	337652.4	4263062.0	-888.7
315	2022-04-21T15:04:47.004000Z	2.004	336711.6	4262691.0	-917.9
316	2022-04-21T15:04:47.992000Z	N/A	N/A	N/A	N/A
317	2022-04-21T15:04:54.909000Z	N/A	N/A	N/A	N/A
318	2022-04-21T15:05:04.926000Z	2.511	336173.3	4262635.0	-1010.1
319	2022-04-21T15:05:05.804000Z	3.624	334542.1	4263479.5	-438.2
320	2022-04-21T15:05:42.920000Z	8.879	334507.8	4263804.5	-619.7
321	2022-04-21T15:05:44.427000Z	9.443	334307.3	4263340.0	-614.4
322	2022-04-21T15:05:46.886000Z	3.139	334792.4	4263718.5	-437.9
323	2022-04-21T15:06:00.668000Z	2.914	338878.2	4262311.5	-1664.4
324	2022-04-21T15:06:22.395000Z	N/A	N/A	N/A	N/A
325	2022-04-21T15:07:05.587000Z	3.542	334617.9	4263856.0	-732.7
326	2022-04-21T15:07:37.158000Z	2.476	336282.5	4262594.0	-1156.5
327	2022-04-21T15:07:41.338000Z	2.501	336749.4	4262485.5	-832.3
328	2022-04-21T15:08:16.088000Z	N/A	N/A	N/A	N/A
329	2022-04-21T15:08:39.000000Z	3.019	337097.9	4262396.5	-1277.5
330	2022-04-21T15:08:53.385000Z	2.825	337969.7	4262348.0	-1248.3
331	2022-04-21T15:09:28.873000Z	13.590	338541.0	4262831.5	-1849.2
332	2022-04-21T15:09:32.394000Z	N/A	N/A	N/A	N/A
333	2022-04-21T15:09:38.248000Z	3.953	334663.6	4263861.0	-743.6
334	2022-04-21T15:09:43.323000Z	2.912	330062.8	4264369.5	-527.7
335	2022-04-21T15:09:45.395000Z	3.260	337981.2	4262771.0	-1603.6
336	2022-04-21T15:10:13.875000Z	2.485	335235.8	4262988.5	-829.7
337	2022-04-21T15:10:17.462000Z	2.019	334517.2	4263584.5	-433.6
338	2022-04-21T15:10:20.178000Z	3.974	334440.2	4263201.0	-560.4
339	2022-04-21T15:10:46.317000Z	2.018	336526.8	4262639.5	-1161.9
340	2022-04-21T15:10:48.039000Z	3.619	338834.7	4262760.5	-1063.2
341	2022-04-21T15:11:26.260000Z	2.478	337858.4	4262291.0	-1161.9

342	2022-04-21T15:11:34.936000Z	3.774	336698.8	4263010.5	-1344.5
343	2022-04-21T15:11:43.009000Z	2.464	338230.8	4262194.0	-1431.5
344	2022-04-21T15:11:55.793000Z	16.349	337891.6	4262380.0	-1580.1
345	2022-04-21T15:11:56.777000Z	3.457	335963.4	4263411.0	-747.9
346	2022-04-21T15:12:07.609000Z	N/A	N/A	N/A	N/A
347	2022-04-21T15:12:31.160000Z	2.511	335545.1	4263013.0	-799.1
348	2022-04-21T15:12:38.497000Z	2.398	339200.1	4262340.5	-1253.3
349	2022-04-21T15:12:50.709000Z	3.805	334479.5	4263685.0	-728.1
350	2022-04-21T15:13:04.429000Z	3.350	335344.6	4262966.5	-744.1
351	2022-04-21T15:13:33.156000Z	2.350	337039.2	4263024.5	-771.6
352	2022-04-21T15:14:15.491000Z	7.126	334373.2	4263222.0	-647.0
353	2022-04-21T15:14:21.022000Z	2.891	334477.9	4263197.5	-704.8
354	2022-04-21T15:14:25.692000Z	4.017	335990.3	4263009.0	-711.8
355	2022-04-21T15:14:45.004000Z	3.161	338657.3	4262269.5	-1304.9
356	2022-04-21T15:15:04.923000Z	N/A	N/A	N/A	N/A
357	2022-04-21T15:15:07.686000Z	4.949	334864.9	4263089.0	-683.3
358	2022-04-21T15:15:08.322000Z	1.996	339155.0	4262561.5	-2121.9
359	2022-04-21T15:15:15.708000Z	3.928	338358.9	4262219.5	-1576.7
360	2022-04-21T15:15:25.173000Z	N/A	N/A	N/A	N/A
361	2022-04-21T15:15:28.559000Z	2.714	337354.5	4262429.5	-1218.6
362	2022-04-21T15:15:50.570000Z	2.184	337409.3	4262823.0	-1098.1
363	2022-04-21T15:15:53.747000Z	3.054	337399.2	4262475.5	-1137.8
364	2022-04-21T15:16:03.239000Z	N/A	N/A	N/A	N/A
365	2022-04-21T15:16:07.323000Z	3.814	338332.3	4262472.5	-1998.4
366	2022-04-21T15:16:24.447000Z	2.655	338732.2	4262050.0	-1431.3
367	2022-04-21T15:16:35.828000Z	4.963	334416.1	4263104.5	-710.1
368	2022-04-21T15:16:39.792000Z	3.044	334395.8	4263217.0	-171.6
369	2022-04-21T15:16:43.982000Z	2.313	338362.1	4262371.5	-1339.0
370	2022-04-21T15:16:56.664000Z	N/A	N/A	N/A	N/A
371	2022-04-21T15:16:59.914000Z	2.673	336070.2	4262652.0	-1219.0
372	2022-04-21T15:17:04.535000Z	2.108	336528.0	4262649.5	-1184.1
373	2022-04-21T15:17:32.690000Z	4.540	334370.6	4263331.0	-686.4
374	2022-04-21T15:17:33.779000Z	1.982	338556.8	4262298.5	-1550.4
375	2022-04-21T15:17:40.391000Z	2.291	334581.3	4263685.5	-441.4
376	2022-04-21T15:17:41.772000Z	2.382	336777.7	4262569.5	-832.1
377	2022-04-21T15:18:01.574000Z	4.048	338981.5	4261885.0	-1818.3
378	2022-04-21T15:18:02.146000Z	2.627	336914.7	4262533.0	-696.0
379	2022-04-21T15:18:05.099000Z	2.615	337172.3	4262688.0	-892.7
380	2022-04-21T15:18:15.788000Z	3.534	338820.6	4262650.5	-1698.5
381	2022-04-21T15:18:18.351000Z	5.489	337671.7	4262845.5	-1643.6
382	2022-04-21T15:18:34.589000Z	2.664	337834.2	4262298.0	-1313.2
383	2022-04-21T15:18:39.895000Z	3.341	335217.1	4263402.5	-800.7
384	2022-04-21T15:19:10.725000Z	3.511	334570.8	4263814.5	-481.7

385	2022-04-21T15:19:12.943000Z	4.461	334546.0	4263794.5	-803.9
386	2022-04-21T15:19:41.766000Z	3.689	338143.8	4262202.0	-1511.3
387	2022-04-21T15:19:54.518000Z	6.584	334379.2	4263220.0	-643.9
388	2022-04-21T15:20:09.425000Z	5.659	334368.1	4263532.5	-740.5
389	2022-04-21T15:20:23.020000Z	6.037	334349.2	4263223.0	-584.7
390	2022-04-21T15:20:26.687000Z	2.421	336484.0	4262547.5	-680.8
391	2022-04-21T15:20:30.098000Z	3.441	335504.4	4263544.0	-977.8
392	2022-04-21T15:20:36.126000Z	3.135	334575.1	4263739.0	-694.4
393	2022-04-21T15:21:03.491000Z	3.026	335092.1	4263285.5	-232.7
394	2022-04-21T15:21:07.728000Z	2.546	337176.0	4262462.0	-1101.6
395	2022-04-21T15:21:16.392000Z	4.010	334533.2	4263388.0	-737.0
396	2022-04-21T15:21:43.426000Z	4.513	334452.4	4263096.5	-827.0
397	2022-04-21T15:21:49.643000Z	3.055	337156.1	4263194.0	-1100.5
398	2022-04-21T15:21:58.041000Z	2.431	337795.2	4262505.5	-1193.1
399	2022-04-21T15:22:02.146000Z	3.838	336169.3	4263047.0	-1099.9
400	2022-04-21T15:22:05.138000Z	3.124	338430.8	4262032.0	-1193.0
401	2022-04-21T15:22:15.740000Z	6.609	335469.3	4263567.0	-679.9
402	2022-04-21T15:22:38.983000Z	2.354	330133.9	4264878.0	-714.0
403	2022-04-21T15:22:39.871000Z	3.213	335301.8	4263286.0	-234.4
404	2022-04-21T15:22:41.515000Z	3.187	337280.7	4262846.0	-983.6
405	2022-04-21T15:22:42.560000Z	3.468	336881.8	4262549.5	-1274.2
406	2022-04-21T15:22:49.818000Z	3.885	338019.5	4262557.5	-1787.9
407	2022-04-21T15:22:52.384000Z	3.326	337320.8	4262329.0	-1310.1
408	2022-04-21T15:22:54.743000Z	2.954	335192.7	4263614.0	-497.1
409	2022-04-21T15:23:10.312000Z	2.799	336539.4	4262542.5	-849.2
410	2022-04-21T15:23:21.160000Z	3.236	335477.1	4263530.5	-704.9
411	2022-04-21T15:23:29.461000Z	2.854	338406.5	4262767.5	-1819.9
412	2022-04-21T15:23:54.398000Z	3.795	335004.5	4263705.0	-627.9
413	2022-04-21T15:24:01.126000Z	3.270	334676.6	4263443.0	-620.9
414	2022-04-21T15:24:01.737000Z	3.363	336880.1	4262487.0	-570.9
415	2022-04-21T15:24:16.042000Z	3.173	334440.1	4263513.0	-710.3
416	2022-04-21T15:24:34.778000Z	3.371	334118.2	4263490.0	-14.9
417	2022-04-21T15:24:45.645000Z	2.598	338075.3	4262640.5	-1580.4
418	2022-04-21T15:24:49.914000Z	3.056	334622.9	4263864.0	-678.0
419	2022-04-21T15:25:21.466000Z	3.414	337514.4	4262587.0	-1039.2
420	2022-04-21T15:25:30.570000Z	3.173	334646.6	4263443.5	-627.9
421	2022-04-21T15:25:32.837000Z	2.472	336795.8	4263052.5	-990.0
422	2022-04-21T15:25:39.078000Z	2.370	335567.2	4263060.0	-236.1
423	2022-04-21T15:25:41.719000Z	3.175	335292.7	4263601.0	-204.6
424	2022-04-21T15:25:55.392000Z	11.046	338551.3	4262244.5	-2141.1
425	2022-04-21T15:25:59.401000Z	3.077	336593.3	4262619.0	-534.8
426	2022-04-21T15:26:09.018000Z	4.025	338483.1	4262272.0	-1844.8
427	2022-04-21T15:26:09.398000Z	3.708	336257.2	4263341.5	-1189.3

428	2022-04-21T15:26:09.887000Z	2.993	335850.1	4262857.0	-592.6
429	2022-04-21T15:26:24.594000Z	2.956	334665.4	4263568.0	-255.9
430	2022-04-21T15:26:33.759000Z	2.518	335200.7	4263629.5	-651.5
431	2022-04-21T15:26:39.398000Z	3.480	337241.4	4262665.5	-999.2
432	2022-04-21T15:26:48.272000Z	3.520	334407.2	4263211.0	-551.4
433	2022-04-21T15:26:50.197000Z	3.324	338498.6	4262109.0	-1674.7
434	2022-04-21T15:26:50.804000Z	2.916	337653.0	4262850.5	-1856.4
435	2022-04-21T15:26:52.584000Z	3.480	335226.1	4262987.0	-797.7
436	2022-04-21T15:27:13.536000Z	3.548	338803.0	4262342.5	-1700.6
437	2022-04-21T15:27:53.345000Z	3.274	335272.8	4263092.5	-25.8
438	2022-04-21T15:27:54.782000Z	N/A	N/A	N/A	N/A
439	2022-04-21T15:27:59.057000Z	12.575	337441.1	4262439.0	-1508.2
440	2022-04-21T15:28:08.025000Z	2.918	338651.4	4262188.5	-1615.9
441	2022-04-21T15:29:27.342000Z	4.558	338934.8	4262532.0	-1817.3
442	2022-04-21T15:29:27.909000Z	5.559	336097.5	4263127.0	-953.4
443	2022-04-21T15:29:32.853000Z	2.553	338945.5	4262713.0	-1845.7
444	2022-04-21T15:29:35.990000Z	3.507	338700.9	4262332.0	-1384.6
445	2022-04-21T15:29:55.341000Z	2.569	334434.2	4263098.5	-228.7
446	2022-04-21T15:30:22.142000Z	2.352	338912.1	4262734.0	-1725.4
447	2022-04-21T15:30:34.588000Z	3.340	334374.7	4263634.0	-352.1
448	2022-04-21T15:30:40.359000Z	2.523	336461.2	4262869.5	-527.5
449	2022-04-21T15:30:42.655000Z	2.906	336779.7	4262676.5	-800.7
450	2022-04-21T15:30:50.221000Z	3.212	338701.5	4262016.5	-2177.8
451	2022-04-21T15:31:02.571000Z	2.673	336914.5	4262436.5	-530.8
452	2022-04-21T15:31:46.255000Z	2.116	336449.5	4262547.5	-1250.1
453	2022-04-21T15:32:18.213000Z	4.098	334408.0	4263842.0	-281.3
454	2022-04-21T15:32:19.051000Z	4.316	334420.8	4263747.5	-439.1
455	2022-04-21T15:32:25.196000Z	2.223	337857.5	4262672.0	-1390.0
456	2022-04-21T15:32:29.494000Z	3.881	334584.5	4263873.0	-593.5
457	2022-04-21T15:32:33.511000Z	2.156	337657.2	4262763.0	-1302.0
458	2022-04-21T15:32:42.174000Z	2.786	335121.3	4262951.5	-146.1
459	2022-04-21T15:32:44.162000Z	3.373	333883.1	4263357.0	-57.7
460	2022-04-21T15:33:17.350000Z	N/A	N/A	N/A	N/A
461	2022-04-21T15:33:27.316000Z	3.642	335260.6	4263167.0	-320.1
462	2022-04-21T15:33:27.890000Z	2.060	336651.1	4263233.5	-954.3
463	2022-04-21T15:33:39.544000Z	3.275	334976.1	4263158.0	-974.4
464	2022-04-21T15:33:48.302000Z	3.282	336835.2	4262458.5	-1217.5
465	2022-04-21T15:33:52.268000Z	1.989	337472.4	4262396.0	-1222.0
466	2022-04-21T15:33:54.476000Z	2.072	336281.3	4262564.5	-666.6
467	2022-04-21T15:34:02.181000Z	2.629	337693.6	4262868.0	-1666.3
468	2022-04-21T15:34:03.161000Z	3.288	335021.0	4263253.5	-414.7
469	2022-04-21T15:34:12.657000Z	N/A	N/A	N/A	N/A
470	2022-04-21T15:34:19.926000Z	2.969	338057.9	4262167.5	-1469.2

471	2022-04-21T15:34:22.992000Z	3.972	334342.3	4263227.0	-494.7
472	2022-04-21T15:34:31.795000Z	3.493	337935.2	4262767.0	-1045.0
473	2022-04-21T15:34:39.835000Z	2.875	337530.0	4263095.5	-955.5
474	2022-04-21T15:34:58.967000Z	3.321	336986.8	4262522.5	-1228.2
475	2022-04-21T15:35:15.482000Z	2.685	336244.8	4263342.5	-1104.1
476	2022-04-21T15:35:19.711000Z	3.983	336655.6	4262507.0	-972.6
477	2022-04-21T15:35:31.748000Z	4.358	334589.7	4263784.0	-916.2
478	2022-04-21T15:35:53.595000Z	2.700	338267.4	4262296.5	-2054.0
479	2022-04-21T15:36:03.349000Z	3.036	335678.2	4263400.5	-533.7
480	2022-04-21T15:36:48.512000Z	4.377	334382.5	4263216.5	-674.3
481	2022-04-21T15:37:00.732000Z	3.416	338149.2	4262211.0	-1216.5
482	2022-04-21T15:37:22.864000Z	2.476	335442.4	4262816.0	-460.7
483	2022-04-21T15:37:39.749000Z	N/A	N/A	N/A	N/A
484	2022-04-21T15:37:42.092000Z	6.589	334366.1	4263324.5	-646.6
485	2022-04-21T15:37:45.811000Z	3.326	335401.0	4263262.5	-440.9
486	2022-04-21T15:38:01.535000Z	3.217	330348.7	4264739.0	-343.8
487	2022-04-21T15:38:12.939000Z	2.878	337046.9	4262396.0	-760.4
488	2022-04-21T15:38:26.410000Z	3.474	334550.6	4263588.0	-678.3
489	2022-04-21T15:38:28.394000Z	3.165	335667.3	4262908.0	-480.1
490	2022-04-21T15:38:44.905000Z	3.118	338759.8	4262253.0	-1945.3
491	2022-04-21T15:38:45.668000Z	3.750	338951.7	4262498.0	-1915.7
492	2022-04-21T15:39:20.338000Z	2.607	338620.4	4262088.5	-1607.5
493	2022-04-21T15:39:30.750000Z	3.333	334443.2	4263407.5	-830.9
494	2022-04-21T15:39:33.507000Z	2.455	334206.8	4263379.5	123.5
495	2022-04-21T15:39:38.948000Z	2.921	337486.0	4262902.0	-1401.4
496	2022-04-21T15:39:39.398000Z	2.937	334300.6	4263953.0	-200.3
497	2022-04-21T15:39:42.046000Z	5.358	334316.1	4263153.5	-836.2
498	2022-04-21T15:39:47.637000Z	3.045	334447.9	4263099.0	-346.4
499	2022-04-21T15:39:57.098000Z	2.345	335710.3	4262838.5	-581.3
500	2022-04-21T15:41:04.475000Z	2.939	335242.2	4262924.0	-195.4
501	2022-04-21T15:41:09.535000Z	2.829	337624.3	4262691.0	-1247.8
502	2022-04-21T15:41:39.566000Z	6.302	337450.2	4262392.0	-1462.9
503	2022-04-21T15:41:40.461000Z	2.655	337000.1	4262624.5	-1223.7
504	2022-04-21T15:42:00.640000Z	6.204	334609.0	4263746.5	-818.9
505	2022-04-21T15:42:24.878000Z	3.254	335284.9	4263583.5	-719.3
506	2022-04-21T15:42:29.695000Z	4.109	338853.8	4262238.5	-2092.8
507	2022-04-21T15:42:46.311000Z	2.770	337136.5	4262383.0	-1178.0
508	2022-04-21T15:42:49.770000Z	3.413	337172.9	4262365.0	-1437.3
509	2022-04-21T15:43:06.211000Z	3.236	337039.1	4262396.5	-882.9
510	2022-04-21T15:43:40.911000Z	2.750	339061.2	4261954.0	-1704.4
511	2022-04-21T15:43:52.808000Z	6.664	338398.9	4262661.5	-1732.8
512	2022-04-21T15:45:02.213000Z	2.154	337038.1	4263169.5	-1255.9
513	2022-04-21T15:45:07.379000Z	2.351	335672.7	4263476.0	-833.8

514	2022-04-21T15:45:08.950000Z	2.078	337725.2	4262223.0	-1541.1
515	2022-04-21T15:45:18.419000Z	3.661	337944.1	4262258.0	-1700.3
516	2022-04-21T15:45:23.759000Z	3.142	338371.6	4262741.5	-1845.9
517	2022-04-21T15:45:37.991000Z	5.737	338225.9	4262190.0	-1851.1
518	2022-04-21T15:45:44.991000Z	2.530	329944.2	4264915.5	-345.6
519	2022-04-21T15:45:54.782000Z	2.360	336989.0	4262510.0	-1070.3
520	2022-04-21T15:46:10.292000Z	4.671	338149.6	4262720.5	-1789.8
521	2022-04-21T15:46:13.256000Z	3.625	335750.4	4262847.5	-739.3
522	2022-04-21T15:46:27.652000Z	3.731	336363.8	4262585.5	-743.5
523	2022-04-21T15:46:42.886000Z	2.207	336572.1	4263035.5	-1069.7
524	2022-04-21T15:47:25.628000Z	2.872	336037.0	4262672.0	-499.4
525	2022-04-21T15:47:58.687000Z	3.886	338427.7	4262755.0	-1763.4
526	2022-04-21T15:48:03.683000Z	2.527	336881.0	4262516.0	-1284.8
527	2022-04-21T15:48:11.217000Z	3.102	337965.3	4262771.0	-1280.5
528	2022-04-21T15:48:20.762000Z	2.653	336713.2	4262603.0	-1465.2
529	2022-04-21T15:48:29.238000Z	3.504	334298.1	4263474.5	-770.2
530	2022-04-21T15:48:42.643000Z	N/A	N/A	N/A	N/A
531	2022-04-21T15:48:56.905000Z	3.524	337833.2	4262189.5	-1396.6
532	2022-04-21T15:48:57.749000Z	3.047	333557.2	4264052.0	189.2
533	2022-04-21T15:49:22.737000Z	3.861	337758.5	4262203.0	-856.9
534	2022-04-21T15:49:44.398000Z	2.035	330195.8	4264336.5	-739.2
535	2022-04-21T15:49:47.056000Z	2.730	335209.7	4263711.0	-468.7
536	2022-04-21T15:50:13.019000Z	2.390	337253.5	4262554.5	-1064.8
537	2022-04-21T15:50:16.795000Z	3.057	335169.7	4263168.5	-633.2
538	2022-04-21T15:50:23.067000Z	2.859	334611.2	4263779.0	128.5
539	2022-04-21T15:50:44.700000Z	3.027	338159.5	4262413.5	-1549.0
540	2022-04-21T15:51:02.188000Z	6.144	334614.1	4263748.5	-812.9
541	2022-04-21T15:51:07.175000Z	2.977	334570.7	4263776.0	-79.9
542	2022-04-21T15:51:29.214000Z	2.744	338701.0	4262053.5	-1612.2
543	2022-04-21T15:51:49.844000Z	N/A	N/A	N/A	N/A
544	2022-04-21T15:52:13.006000Z	5.967	338232.6	4262190.5	-1855.4
545	2022-04-21T15:52:22.259000Z	2.887	336913.4	4262658.5	-1340.1
546	2022-04-21T15:53:15.651000Z	2.367	339276.8	4262417.5	-1480.1
547	2022-04-21T15:54:02.921000Z	3.336	337471.6	4262324.5	-1111.5
548	2022-04-21T15:54:22.694000Z	3.455	338261.7	4262694.0	-1583.2
549	2022-04-21T15:54:32.158000Z	3.092	336850.8	4262473.0	-1342.6
550	2022-04-21T15:54:34.870000Z	2.339	335546.3	4263011.0	-915.7
551	2022-04-21T15:54:46.877000Z	4.892	338282.7	4262278.0	-1793.5
552	2022-04-21T15:54:50.778000Z	2.439	339236.9	4262103.5	-1927.9
553	2022-04-21T15:55:13.615000Z	3.262	337927.7	4262859.0	-1262.7
554	2022-04-21T15:55:30.606000Z	3.146	338817.2	4262548.0	-1940.4
555	2022-04-21T15:55:53.531000Z	2.937	337710.8	4262675.0	-1405.3
556	2022-04-21T15:55:54.628000Z	2.371	334897.6	4263656.0	-378.6

557	2022-04-21T15:56:00.192000Z	2.583	329834.7	4264441.5	-112.4
558	2022-04-21T15:56:09.634000Z	5.181	335061.3	4263032.5	-767.6
559	2022-04-21T15:56:10.467000Z	2.873	330209.2	4264953.5	-918.8
560	2022-04-21T15:56:17.384000Z	3.665	338358.2	4262273.0	-1803.0
561	2022-04-21T15:56:19.893000Z	3.072	339196.4	4261927.5	-2178.3
562	2022-04-21T15:56:20.487000Z	3.195	337839.9	4262596.5	-1672.9
563	2022-04-21T15:56:23.851000Z	4.306	338512.8	4262113.5	-979.0
564	2022-04-21T15:56:24.448000Z	2.297	339234.8	4262016.0	-1756.5
565	2022-04-21T15:56:44.879000Z	2.610	336618.7	4262626.5	-796.0
566	2022-04-21T15:56:46.590000Z	2.599	338298.7	4262792.0	-1523.4
567	2022-04-21T15:56:52.203000Z	3.342	334739.5	4263833.5	-923.8
568	2022-04-21T15:57:07.861000Z	2.539	335433.7	4263342.5	-629.8
569	2022-04-21T15:58:19.865000Z	2.136	336979.1	4262526.0	-975.6
570	2022-04-21T15:58:36.661000Z	2.555	334558.9	4263228.0	-467.0
571	2022-04-21T15:58:38.200000Z	2.599	337279.9	4262872.0	-852.8
572	2022-04-21T15:58:44.173000Z	3.325	338139.6	4262525.0	-1193.2
573	2022-04-21T15:58:44.750000Z	3.636	336109.1	4262786.5	-1100.5
574	2022-04-21T15:58:54.398000Z	3.229	333654.2	4264049.0	822.7
575	2022-04-21T15:59:07.442000Z	2.288	334108.3	4263491.0	-194.0
576	2022-04-21T15:59:08.027000Z	2.651	337491.4	4262273.5	-955.5
577	2022-04-21T15:59:10.180000Z	4.232	338656.2	4262791.5	-1852.0
578	2022-04-21T15:59:45.624000Z	5.076	334629.2	4263762.0	-922.0
579	2022-04-21T16:00:10.584000Z	3.891	338050.7	4262837.5	-1546.4
580	2022-04-21T16:00:14.307000Z	1.936	338006.1	4262851.5	-946.5
581	2022-04-21T16:00:16.900000Z	2.074	337179.0	4262564.5	-952.8
582	2022-04-21T16:00:34.171000Z	3.345	337951.3	4262778.5	-1459.0
583	2022-04-21T16:00:46.181000Z	3.673	335529.2	4263014.0	-889.0
584	2022-04-21T16:00:48.195000Z	3.765	336174.1	4262942.0	-1068.8
585	2022-04-21T16:01:14.211000Z	2.947	336861.5	4262551.0	-1316.2
586	2022-04-21T16:01:31.480000Z	2.424	335782.6	4263433.0	-705.7
587	2022-04-21T16:02:07.241000Z	1.978	336291.4	4262600.5	-765.0
588	2022-04-21T16:02:09.629000Z	2.015	334415.2	4263832.5	722.2
589	2022-04-21T16:02:21.740000Z	2.189	339062.5	4262476.0	-1819.0
590	2022-04-21T16:02:37.775000Z	3.164	335099.8	4263597.5	-1118.8
591	2022-04-21T16:02:51.269000Z	2.164	335591.0	4263512.0	-711.1
592	2022-04-21T16:03:04.927000Z	2.076	339307.8	4262627.5	-1818.5
593	2022-04-21T16:03:09.398000Z	4.012	338880.0	4262222.5	-2090.6
594	2022-04-21T16:03:11.332000Z	12.075	338560.4	4262724.5	-1828.4
595	2022-04-21T16:03:34.360000Z	2.363	329822.7	4264447.0	-833.5
596	2022-04-21T16:03:57.276000Z	4.794	338317.1	4262163.5	-1908.1
597	2022-04-21T16:04:14.024000Z	3.503	335732.2	4263281.5	-446.5
598	2022-04-21T16:04:25.533000Z	2.252	339251.1	4262535.5	-2181.8
599	2022-04-21T16:04:51.661000Z	N/A	N/A	N/A	N/A

600	2022-04-21T16:05:34.559000Z	3.263	338715.9	4262167.5	-1691.1
601	2022-04-21T16:06:19.593000Z	2.261	339175.3	4261850.5	-1726.3
602	2022-04-21T16:06:20.496000Z	N/A	N/A	N/A	N/A
603	2022-04-21T16:06:27.348000Z	N/A	N/A	N/A	N/A
604	2022-04-21T16:06:28.910000Z	3.310	330095.1	4264326.0	-916.2
605	2022-04-21T16:06:33.890000Z	3.322	337237.4	4262340.0	-768.7
606	2022-04-21T16:06:54.077000Z	2.774	337646.7	4262249.0	-857.6
607	2022-04-21T16:06:54.398000Z	3.300	337764.8	4263038.0	-1309.4
608	2022-04-21T16:07:02.720000Z	4.411	335145.2	4263011.5	-867.5
609	2022-04-21T16:07:34.399000Z	2.175	335411.8	4263355.0	-860.2
610	2022-04-21T16:08:08.633000Z	2.971	337969.7	4262763.5	-565.0
611	2022-04-21T16:08:17.319000Z	2.529	336142.5	4263375.5	-919.3
612	2022-04-21T16:08:20.874000Z	2.174	336206.8	4262732.0	-925.0
613	2022-04-21T16:08:34.037000Z	2.682	336274.0	4262625.0	-716.3
614	2022-04-21T16:09:01.624000Z	3.069	336466.7	4262563.0	-1137.8
615	2022-04-21T16:09:21.592000Z	3.171	334158.8	4263687.0	133.0
616	2022-04-21T16:09:53.657000Z	3.319	335929.4	4262886.0	-980.8
617	2022-04-21T16:10:06.434000Z	2.392	337061.1	4262490.0	-1370.6
618	2022-04-21T16:10:28.743000Z	2.544	336686.4	4262603.0	-768.3
619	2022-04-21T16:10:33.405000Z	2.544	336656.6	4262595.0	-1006.2
620	2022-04-21T16:10:34.414000Z	2.484	334035.8	4263649.5	-202.4
621	2022-04-21T16:10:36.508000Z	3.853	337733.5	4263043.5	-1252.4
622	2022-04-21T16:10:43.971000Z	3.254	335388.5	4263667.0	-589.3
623	2022-04-21T16:10:57.147000Z	12.875	338467.9	4262738.0	-1764.6
624	2022-04-21T16:11:05.668000Z	3.230	334244.6	4263978.5	-920.3
625	2022-04-21T16:11:17.463000Z	4.150	334545.7	4263902.0	-741.2
626	2022-04-21T16:11:38.564000Z	2.119	334995.3	4262963.5	-880.2
627	2022-04-21T16:12:27.105000Z	2.777	336820.2	4262562.5	-1103.8
628	2022-04-21T16:12:34.081000Z	2.716	336825.6	4262462.5	-834.8
629	2022-04-21T16:12:36.504000Z	2.045	336354.2	4262558.5	-1091.4
630	2022-04-21T16:13:56.970000Z	3.530	334863.6	4263499.5	-140.0
631	2022-04-21T16:14:10.382000Z	3.505	337963.1	4262563.0	-1645.0
632	2022-04-21T16:15:09.803000Z	N/A	N/A	N/A	N/A
633	2022-04-21T16:15:15.223000Z	4.029	335200.0	4263227.0	374.7
634	2022-04-21T16:15:25.999000Z	2.318	335956.1	4263462.5	-726.7
635	2022-04-21T16:15:30.004000Z	2.141	336258.1	4262618.5	-1127.6
636	2022-04-21T16:15:37.560000Z	3.498	336252.9	4263333.5	-1038.8
637	2022-04-21T16:16:22.282000Z	3.417	335380.0	4263258.5	-531.6
638	2022-04-21T16:16:23.146000Z	3.004	338826.5	4262122.0	-1556.2
639	2022-04-21T16:16:36.166000Z	5.589	335379.3	4263574.5	-969.9
640	2022-04-21T16:16:46.496000Z	3.560	336090.4	4262758.0	-854.2
641	2022-04-21T16:17:08.831000Z	3.764	338009.3	4262964.0	-1786.6
642	2022-04-21T16:17:29.919000Z	2.331	336407.4	4263090.5	-1073.5

643	2022-04-21T16:18:20.116000Z	2.399	337261.2	4262448.5	-1250.4
644	2022-04-21T16:18:20.910000Z	2.406	334750.8	4263633.5	-618.0
645	2022-04-21T16:18:25.680000Z	1.940	335109.9	4263025.0	-826.2
646	2022-04-21T16:18:29.551000Z	N/A	N/A	N/A	N/A
647	2022-04-21T16:19:02.589000Z	3.563	338249.8	4262182.0	-1282.3
648	2022-04-21T16:19:03.764000Z	3.078	337153.2	4263080.5	-541.6
649	2022-04-21T16:19:07.148000Z	3.222	337220.4	4262631.0	-889.0
650	2022-04-21T16:19:11.762000Z	3.553	334632.8	4263699.5	-485.5
651	2022-04-21T16:19:28.776000Z	3.046	339083.8	4261859.5	-2062.5
652	2022-04-21T16:20:00.467000Z	3.472	336849.2	4262457.0	-1277.6
653	2022-04-21T16:20:16.503000Z	3.759	338862.3	4262643.5	-2147.0
654	2022-04-21T16:20:28.100000Z	3.266	335033.7	4263043.0	-710.5
655	2022-04-21T16:21:00.566000Z	5.252	334964.2	4263159.0	-713.4
656	2022-04-21T16:21:01.195000Z	2.535	337966.8	4262871.5	-1202.3
657	2022-04-21T16:21:40.631000Z	4.867	338472.5	4262755.0	-1858.7
658	2022-04-21T16:21:48.898000Z	2.427	336201.5	4262647.5	-742.5
659	2022-04-21T16:22:15.041000Z	5.162	336254.5	4263326.0	-1127.5
660	2022-04-21T16:22:50.330000Z	N/A	N/A	N/A	N/A
661	2022-04-21T16:22:57.930000Z	2.637	329866.2	4264596.0	-601.5
662	2022-04-21T16:23:04.277000Z	2.052	336768.8	4262573.5	-803.6
663	2022-04-21T16:23:20.042000Z	3.509	337665.9	4262325.0	-884.8
664	2022-04-21T16:23:39.440000Z	3.449	337305.1	4263059.5	-979.8
665	2022-04-21T16:23:48.143000Z	3.253	337004.4	4262528.5	-861.0
666	2022-04-21T16:25:10.393000Z	N/A	N/A	N/A	N/A
667	2022-04-21T16:26:07.878000Z	3.237	337793.2	4262513.0	-1129.0
668	2022-04-21T16:26:22.268000Z	2.767	336878.7	4262546.0	-1283.6
669	2022-04-21T16:26:29.736000Z	4.023	335288.6	4263083.5	-895.1
670	2022-04-21T16:26:52.415000Z	2.519	329991.9	4264493.5	-503.9
671	2022-04-21T16:27:26.127000Z	2.580	335660.7	4263060.0	-493.3
672	2022-04-21T16:27:52.621000Z	3.522	337407.4	4262351.0	-993.6
673	2022-04-21T16:27:58.802000Z	2.132	336658.8	4262498.0	-1124.2
674	2022-04-21T16:28:12.428000Z	2.018	337414.6	4263034.5	-1099.7
675	2022-04-21T16:28:34.112000Z	2.888	334310.3	4263132.5	-631.6
676	2022-04-21T16:28:44.295000Z	4.632	337825.7	4262155.5	-994.3
677	2022-04-21T16:29:53.475000Z	3.544	337800.5	4262927.5	-1277.6
678	2022-04-21T16:30:07.486000Z	2.548	334631.5	4263023.0	-316.0
679	2022-04-21T16:30:18.742000Z	2.365	336447.7	4262544.0	-1154.1
680	2022-04-21T16:30:46.999000Z	2.990	337787.7	4262735.0	-1302.2
681	2022-04-21T16:31:01.872000Z	2.489	336842.1	4262484.0	-1195.7
682	2022-04-21T16:31:21.208000Z	2.078	335185.6	4263517.0	-648.2
683	2022-04-21T16:31:59.924000Z	3.345	333740.5	4263898.0	724.6
684	2022-04-21T16:32:19.127000Z	3.454	338623.4	4262081.5	-1215.4
685	2022-04-21T16:32:20.897000Z	3.006	337417.3	4263032.5	-915.5

686	2022-04-21T16:32:32.416000Z	3.271	337538.1	4262970.0	-1581.5
687	2022-04-21T16:32:32.983000Z	2.644	339335.7	4262476.5	-2049.7
688	2022-04-21T16:33:04.230000Z	2.132	335710.8	4263062.5	-473.5
689	2022-04-21T16:33:11.324000Z	2.435	337700.0	4262229.0	-1222.0
690	2022-04-21T16:33:41.759000Z	3.683	339297.6	4262121.0	-1703.5
691	2022-04-21T16:33:44.917000Z	N/A	N/A	N/A	N/A
692	2022-04-21T16:34:44.764000Z	5.278	338448.4	4262606.5	-2061.1
693	2022-04-21T16:34:45.610000Z	2.172	336880.8	4262555.5	-1243.4
694	2022-04-21T16:34:52.030000Z	1.935	339196.1	4262355.5	-1731.1
695	2022-04-21T16:35:12.330000Z	2.700	335811.1	4263149.0	-443.5
696	2022-04-21T16:35:17.480000Z	2.781	337738.2	4262840.5	-1126.5
697	2022-04-21T16:35:25.834000Z	3.135	337825.8	4262909.0	-1250.6
698	2022-04-21T16:35:26.869000Z	2.715	337803.3	4262844.0	-1386.1
699	2022-04-21T16:35:48.955000Z	2.690	335156.5	4263317.5	-281.9
700	2022-04-21T16:36:10.511000Z	3.137	337731.9	4262944.0	-1496.0
701	2022-04-21T16:37:21.883000Z	N/A	N/A	N/A	N/A
702	2022-04-21T16:38:38.890000Z	3.265	339146.2	4261860.5	-2004.6
703	2022-04-21T16:38:39.409000Z	3.989	334188.7	4263112.0	147.5
704	2022-04-21T16:38:42.736000Z	3.080	337556.0	4262369.5	-828.2
705	2022-04-21T16:38:55.004000Z	2.868	337246.3	4262395.0	-1346.7
706	2022-04-21T16:39:38.020000Z	2.286	336697.5	4262490.0	-615.9
707	2022-04-21T16:39:53.563000Z	3.028	334774.0	4263520.5	-412.9
708	2022-04-21T16:40:09.427000Z	2.162	336111.1	4263065.0	-1340.7
709	2022-04-21T16:40:15.953000Z	3.410	337408.8	4262303.0	-1072.7
710	2022-04-21T16:40:30.013000Z	2.671	338410.0	4262122.5	-1396.6
711	2022-04-21T16:40:35.867000Z	N/A	N/A	N/A	N/A
712	2022-04-21T16:41:04.326000Z	3.212	337784.2	4262923.5	-1405.3
713	2022-04-21T16:41:13.715000Z	N/A	N/A	N/A	N/A
714	2022-04-21T16:41:37.251000Z	3.119	338361.6	4262143.0	-1759.7
715	2022-04-21T16:41:37.987000Z	2.971	336136.2	4262848.0	-616.8
716	2022-04-21T16:42:08.855000Z	3.340	334969.1	4263674.0	-196.3
717	2022-04-21T16:42:12.786000Z	3.276	334593.3	4263166.5	-85.5
718	2022-04-21T16:42:26.469000Z	3.216	337371.4	4262409.0	-1309.3
719	2022-04-21T16:42:48.228000Z	3.219	336719.2	4262484.5	-861.7
720	2022-04-21T16:43:38.224000Z	2.319	336754.0	4262498.0	-1110.4
721	2022-04-21T16:43:39.865000Z	2.390	333889.3	4263445.0	-44.2
722	2022-04-21T16:43:41.375000Z	2.994	329878.9	4264640.5	-464.9
723	2022-04-21T16:43:48.109000Z	2.503	336783.5	4262566.5	-1248.2
724	2022-04-21T16:43:55.774000Z	3.518	338493.4	4262843.5	-1726.9
725	2022-04-21T16:44:18.615000Z	4.474	335157.8	4263320.0	-953.5
726	2022-04-21T16:44:19.440000Z	N/A	N/A	N/A	N/A
727	2022-04-21T16:44:26.264000Z	2.675	338247.1	4262184.0	-1437.6
728	2022-04-21T16:44:40.375000Z	4.642	338132.9	4262826.5	-1789.0

729	2022-04-21T16:44:48.291000Z	3.061	334986.6	4263057.0	-441.2
730	2022-04-21T16:45:32.083000Z	3.337	337748.7	4262310.5	-1582.2
731	2022-04-21T16:45:34.009000Z	N/A	N/A	N/A	N/A
732	2022-04-21T16:45:58.049000Z	2.769	339175.3	4261835.0	-1186.4
733	2022-04-21T16:46:40.500000Z	2.370	333890.2	4263358.0	-55.2
734	2022-04-21T16:46:51.417000Z	2.006	337038.7	4262816.0	-871.5
735	2022-04-21T16:46:59.671000Z	3.284	337543.9	4263095.0	-1459.9
736	2022-04-21T16:47:26.922000Z	2.864	338503.7	4262122.5	-1516.7
737	2022-04-21T16:47:34.094000Z	3.462	337668.0	4262429.0	-1137.7
738	2022-04-21T16:48:21.263000Z	2.415	338642.8	4262195.0	-525.0
739	2022-04-21T16:48:43.510000Z	3.349	338179.4	4262185.5	-1813.8
740	2022-04-21T16:48:53.896000Z	3.090	338129.7	4262234.5	-1358.1
741	2022-04-21T16:48:54.398000Z	3.224	334479.1	4263401.5	-113.8
742	2022-04-21T16:49:23.611000Z	3.369	334869.3	4263703.0	-224.4
743	2022-04-21T16:50:25.131000Z	N/A	N/A	N/A	N/A
744	2022-04-21T16:50:30.161000Z	3.483	335410.1	4262836.0	-387.9
745	2022-04-21T16:50:45.507000Z	2.773	337765.7	4262224.0	-1125.9
746	2022-04-21T16:50:54.057000Z	2.320	338276.4	4262474.0	-1639.4
747	2022-04-21T16:50:54.398000Z	3.069	336977.3	4262515.0	-861.4
748	2022-04-21T16:51:18.520000Z	2.464	337801.2	4262517.0	-1157.7
749	2022-04-21T16:51:24.398000Z	2.305	335808.6	4262724.5	-890.9
750	2022-04-21T16:51:29.354000Z	N/A	N/A	N/A	N/A
751	2022-04-21T16:51:41.196000Z	N/A	N/A	N/A	N/A
752	2022-04-21T16:53:46.701000Z	3.554	335201.8	4263221.5	-121.7
753	2022-04-21T16:54:04.778000Z	2.886	335019.8	4263574.5	-822.3
754	2022-04-21T16:54:28.843000Z	3.297	337938.9	4262267.5	-1764.5
755	2022-04-21T16:54:30.693000Z	4.886	335221.2	4262876.5	-806.4
756	2022-04-21T16:55:51.109000Z	2.561	337667.7	4262868.0	-1486.2
757	2022-04-21T16:56:29.479000Z	4.438	338039.7	4262238.5	-1611.8
758	2022-04-21T16:56:31.649000Z	2.749	336585.4	4262629.5	-1246.7
759	2022-04-21T16:56:50.665000Z	2.711	334501.8	4263497.0	-25.6
760	2022-04-21T16:56:54.398000Z	2.667	336257.6	4262613.5	-1207.3
761	2022-04-21T16:56:59.377000Z	3.019	337717.2	4262632.0	-1257.3
762	2022-04-21T16:57:12.742000Z	3.745	337388.8	4262882.5	-765.0
763	2022-04-21T16:58:11.040000Z	4.012	337432.2	4262998.5	-1456.1
764	2022-04-21T16:58:16.036000Z	3.089	335606.6	4263518.0	-259.7
765	2022-04-21T16:58:27.412000Z	2.395	336558.2	4262521.5	-1218.0
766	2022-04-21T16:59:00.175000Z	2.983	334626.3	4263363.5	-647.7
767	2022-04-21T16:59:13.659000Z	2.614	337169.8	4262474.5	-982.3
768	2022-04-21T16:59:50.797000Z	N/A	N/A	N/A	N/A
769	2022-04-21T16:59:56.479000Z	2.437	335386.6	4262828.0	-55.7
770	2022-04-21T17:00:07.824000Z	N/A	N/A	N/A	N/A
771	2022-04-21T17:00:43.038000Z	1.976	335708.9	4263577.5	-584.1

772	2022-04-21T17:01:19.250000Z	3.079	338361.9	4262247.0	-1685.5
773	2022-04-21T17:01:23.450000Z	3.017	335487.5	4262836.0	-1041.3
774	2022-04-21T17:01:38.265000Z	2.798	336445.7	4262566.0	-708.1
775	2022-04-21T17:01:45.997000Z	2.416	329978.5	4264998.5	-1064.9
776	2022-04-21T17:02:05.570000Z	2.751	338609.0	4261982.5	-1272.1
777	2022-04-21T17:02:13.292000Z	2.497	338717.9	4262381.5	-1454.6
778	2022-04-21T17:02:42.965000Z	3.228	339042.5	4262174.0	-2057.5
779	2022-04-21T17:02:44.455000Z	2.927	338634.4	4262601.5	-1374.3
780	2022-04-21T17:02:46.434000Z	2.387	338630.5	4262703.5	-1516.2
781	2022-04-21T17:03:11.874000Z	2.673	338724.8	4262544.0	-1442.5
782	2022-04-21T17:03:21.810000Z	3.476	335463.0	4263444.5	-952.6
783	2022-04-21T17:03:23.119000Z	2.783	335493.1	4263548.0	-475.5
784	2022-04-21T17:03:52.718000Z	3.559	335113.6	4263756.5	-770.1
785	2022-04-21T17:04:26.728000Z	N/A	N/A	N/A	N/A
786	2022-04-21T17:05:16.680000Z	3.774	337213.8	4262392.5	-364.3
787	2022-04-21T17:05:26.997000Z	N/A	N/A	N/A	N/A
788	2022-04-21T17:05:40.157000Z	2.967	336010.7	4263220.5	-708.0
789	2022-04-21T17:05:49.240000Z	N/A	N/A	N/A	N/A
790	2022-04-21T17:05:57.245000Z	2.118	334289.9	4263344.0	-81.4
791	2022-04-21T17:06:17.378000Z	4.301	335928.5	4262799.5	-1009.5
792	2022-04-21T17:06:19.274000Z	2.903	336873.0	4262462.5	-1096.2
793	2022-04-21T17:06:28.390000Z	4.246	336216.8	4262724.5	-1219.3
794	2022-04-21T17:06:29.319000Z	7.320	338232.0	4262190.5	-1884.8
795	2022-04-21T17:06:29.891000Z	7.123	337507.4	4262463.0	-1578.8
796	2022-04-21T17:06:34.683000Z	3.179	335665.1	4263491.0	-738.9
797	2022-04-21T17:06:47.895000Z	2.258	336260.9	4262717.0	-972.5
798	2022-04-21T17:06:54.756000Z	2.614	336860.1	4262464.0	-1274.9
799	2022-04-21T17:07:04.698000Z	3.232	336172.8	4262952.5	-1173.3
800	2022-04-21T17:07:26.377000Z	2.657	338715.5	4262358.0	-1634.4
801	2022-04-21T17:07:38.090000Z	4.224	336888.9	4262543.0	-1014.5
802	2022-04-21T17:08:47.118000Z	3.140	338389.5	4262458.5	-1311.5
803	2022-04-21T17:09:09.743000Z	3.885	335200.5	4263731.5	-585.9
804	2022-04-21T17:09:10.607000Z	3.043	333845.1	4263264.0	102.9
805	2022-04-21T17:09:15.242000Z	2.351	339188.4	4262567.0	-1334.9
806	2022-04-21T17:09:28.165000Z	3.377	334960.5	4263511.5	-511.1
807	2022-04-21T17:09:29.031000Z	2.384	338630.8	4262080.5	-1760.5
808	2022-04-21T17:10:01.798000Z	2.581	335969.2	4263098.5	-1071.4
809	2022-04-21T17:10:26.780000Z	2.419	337379.7	4262708.5	-1130.9
810	2022-04-21T17:10:37.701000Z	2.260	338188.2	4262093.5	-1377.6
811	2022-04-21T17:10:56.108000Z	3.663	337869.3	4263012.5	-1638.0
812	2022-04-21T17:11:01.835000Z	3.035	335195.2	4263619.5	-1009.2
813	2022-04-21T17:11:02.447000Z	3.677	338052.5	4262734.5	-1876.6
814	2022-04-21T17:11:07.272000Z	2.558	337038.7	4262525.0	-1189.8

815	2022-04-21T17:11:08.195000Z	3.587	337464.9	4262486.0	-1430.5
816	2022-04-21T17:12:47.326000Z	2.166	338041.2	4262132.5	-1345.4
817	2022-04-21T17:13:00.192000Z	4.028	334059.8	4263611.0	-469.0
818	2022-04-21T17:13:14.255000Z	1.935	335062.8	4263162.5	-603.2
819	2022-04-21T17:13:34.766000Z	2.285	336891.0	4262439.5	-1103.6
820	2022-04-21T17:13:39.398000Z	2.332	335567.7	4263504.0	-925.6
821	2022-04-21T17:14:19.847000Z	2.320	329862.0	4264535.0	-621.2
822	2022-04-21T17:14:23.388000Z	2.175	338713.9	4262159.5	-1492.0
823	2022-04-21T17:14:35.477000Z	2.505	337401.1	4262295.5	-1528.8
824	2022-04-21T17:14:45.845000Z	2.989	336823.9	4262557.5	-881.1
825	2022-04-21T17:15:04.669000Z	N/A	N/A	N/A	N/A
826	2022-04-21T17:17:03.012000Z	2.781	338147.7	4262619.0	-1698.8
827	2022-04-21T17:17:23.375000Z	3.140	336150.2	4262667.0	-381.7
828	2022-04-21T17:18:41.739000Z	3.164	337997.5	4262865.0	-1522.7
829	2022-04-21T17:19:34.744000Z	3.867	335193.8	4263612.5	224.4
830	2022-04-21T17:19:40.651000Z	3.278	336201.6	4262753.0	-399.2
831	2022-04-21T17:19:41.741000Z	3.857	336683.0	4262598.0	-796.7
832	2022-04-21T17:19:48.632000Z	3.851	337002.4	4262514.0	-894.7
833	2022-04-21T17:20:15.087000Z	3.230	337822.6	4262205.0	-1400.3
834	2022-04-21T17:20:15.940000Z	3.720	329980.0	4264295.0	-411.5
835	2022-04-21T17:20:22.209000Z	3.266	333937.0	4263526.5	-31.3
836	2022-04-21T17:20:45.852000Z	3.556	338688.7	4262259.0	-1627.6
837	2022-04-21T17:21:27.007000Z	N/A	N/A	N/A	N/A
838	2022-04-21T17:21:31.325000Z	N/A	N/A	N/A	N/A
839	2022-04-21T17:21:54.400000Z	2.697	336108.6	4263486.5	-646.5
840	2022-04-21T17:22:56.186000Z	3.781	338463.3	4262637.5	-1576.6
841	2022-04-21T17:23:12.581000Z	4.288	334391.1	4263519.5	549.5
842	2022-04-21T17:23:13.527000Z	2.140	337823.5	4262191.5	-1347.4
843	2022-04-21T17:23:23.077000Z	3.040	337812.7	4262505.5	-1309.2
844	2022-04-21T17:23:28.207000Z	3.282	337336.0	4262787.0	-1192.7
845	2022-04-21T17:23:43.281000Z	N/A	N/A	N/A	N/A
846	2022-04-21T17:23:49.456000Z	3.810	335554.0	4263530.5	-1011.4
847	2022-04-21T17:24:15.811000Z	2.831	334316.3	4263330.0	344.3
848	2022-04-21T17:24:35.546000Z	3.036	338486.4	4262315.5	-1516.2
849	2022-04-21T17:24:38.848000Z	2.121	338315.7	4262161.5	-1489.4
850	2022-04-21T17:24:53.567000Z	4.288	338208.9	4262189.5	-1762.0
851	2022-04-21T17:25:02.570000Z	4.462	335809.2	4263158.5	-918.9
852	2022-04-21T17:25:50.558000Z	3.007	338618.2	4262073.0	-1820.1
853	2022-04-21T17:28:19.219000Z	4.811	334537.0	4263905.5	-795.4
854	2022-04-21T17:29:06.791000Z	3.307	334758.2	4263524.0	-18.3
855	2022-04-21T17:29:08.142000Z	3.522	338339.3	4262246.0	-1100.2
856	2022-04-21T17:29:54.398000Z	2.326	338205.1	4262512.5	-1793.1
857	2022-04-21T17:31:09.407000Z	3.502	337455.0	4262761.5	-1301.6

858	2022-04-21T17:31:10.267000Z	2.483	336773.6	4262480.5	-622.8
859	2022-04-21T17:31:35.947000Z	2.951	334808.0	4263001.0	-475.1
860	2022-04-21T17:33:56.371000Z	2.526	337832.4	4262530.0	-1410.9
861	2022-04-21T17:34:05.844000Z	2.521	336354.6	4262573.5	-1006.8
862	2022-04-21T17:34:27.760000Z	3.254	337748.2	4263043.5	-984.8
863	2022-04-21T17:34:46.223000Z	2.495	334003.6	4263458.0	-174.9
864	2022-04-21T17:36:16.263000Z	2.086	339154.3	4262547.5	-2060.5
865	2022-04-21T17:36:50.480000Z	4.865	339109.1	4262376.5	-2121.6
866	2022-04-21T17:37:01.461000Z	2.497	335291.6	4262973.0	-825.7
867	2022-04-21T17:37:04.562000Z	3.071	335646.4	4262977.0	-704.7
868	2022-04-21T17:37:05.151000Z	2.840	335996.9	4262743.0	-1043.2
869	2022-04-21T17:37:36.999000Z	N/A	N/A	N/A	N/A
870	2022-04-21T17:39:14.879000Z	2.227	336370.8	4262600.0	-1075.4
871	2022-04-21T17:39:19.501000Z	3.376	337650.8	4262343.5	-1486.3
872	2022-04-21T17:39:46.017000Z	3.025	335329.0	4263587.0	-796.1
873	2022-04-21T17:39:50.468000Z	5.092	335266.6	4263084.5	-862.1
874	2022-04-21T17:40:12.895000Z	2.872	335148.4	4263431.5	-258.8
875	2022-04-21T17:40:41.702000Z	3.352	338547.8	4262725.0	-1734.3
876	2022-04-21T17:41:00.530000Z	N/A	N/A	N/A	N/A
877	2022-04-21T17:42:09.398000Z	2.826	336194.4	4262721.5	-656.0
878	2022-04-21T17:43:02.751000Z	2.245	337151.3	4262375.0	-1339.3
879	2022-04-21T17:43:16.931000Z	2.924	338178.0	4262372.5	-1009.0
880	2022-04-21T17:43:40.382000Z	N/A	N/A	N/A	N/A
881	2022-04-21T17:43:44.196000Z	3.255	335404.4	4262834.0	-886.0
882	2022-04-21T17:43:46.176000Z	3.120	338333.2	4262247.5	-1370.9
883	2022-04-21T17:43:48.976000Z	2.426	336829.1	4262462.0	-926.3
884	2022-04-21T17:46:14.113000Z	3.881	335095.1	4262938.5	-803.5
885	2022-04-21T17:46:20.284000Z	3.506	330168.3	4264974.0	-770.9
886	2022-04-21T17:46:26.701000Z	2.868	335329.5	4263563.5	-325.5
887	2022-04-21T17:47:05.924000Z	2.404	337929.1	4262884.5	-1218.9
888	2022-04-21T17:47:09.857000Z	N/A	N/A	N/A	N/A
889	2022-04-21T17:47:14.831000Z	3.752	330161.6	4264511.0	-587.8
890	2022-04-21T17:47:23.731000Z	2.688	338272.1	4262805.5	-1280.9
891	2022-04-21T17:48:01.892000Z	3.172	334962.3	4263424.0	-138.6
892	2022-04-21T17:49:29.269000Z	3.911	338284.4	4262473.0	-1766.2
893	2022-04-21T17:50:02.839000Z	3.233	338302.3	4262173.5	-1581.8
894	2022-04-21T17:50:52.431000Z	2.707	336259.6	4262731.5	-653.7
895	2022-04-21T17:52:26.744000Z	2.045	338695.0	4262475.0	-1398.5
896	2022-04-21T17:52:30.125000Z	N/A	N/A	N/A	N/A
897	2022-04-21T17:52:30.871000Z	2.147	335509.5	4263437.5	-510.7
898	2022-04-21T17:53:22.145000Z	2.192	337035.3	4262388.5	-859.6
899	2022-04-21T17:53:31.246000Z	2.688	334053.0	4263186.0	736.0
900	2022-04-21T17:53:33.509000Z	N/A	N/A	N/A	N/A

901	2022-04-21T17:54:04.045000Z	3.287	337514.7	4262284.5	-837.3
902	2022-04-21T17:54:56.455000Z	2.520	336101.1	4263250.5	-1279.3
903	2022-04-21T17:55:37.835000Z	3.806	337508.5	4262997.5	-1402.4
904	2022-04-21T17:55:38.686000Z	3.217	336891.9	4262540.0	-1295.5
905	2022-04-21T17:56:00.449000Z	3.252	336947.3	4262426.0	-984.0
906	2022-04-21T17:56:27.403000Z	3.255	336173.1	4262642.0	-647.2
907	2022-04-21T17:57:33.940000Z	2.401	335470.4	4262835.5	-917.3
908	2022-04-21T17:57:48.395000Z	3.016	337375.8	4262515.0	-793.0
909	2022-04-21T17:57:51.511000Z	3.379	334300.0	4263443.5	-503.6
910	2022-04-21T17:58:14.132000Z	2.917	330104.9	4264631.0	-514.9
911	2022-04-21T17:58:24.910000Z	N/A	N/A	N/A	N/A
912	2022-04-21T17:58:25.758000Z	3.103	333850.3	4264086.5	103.0
913	2022-04-21T17:58:27.994000Z	2.325	335172.7	4262993.0	-597.4
914	2022-04-21T17:59:02.961000Z	3.005	338915.1	4262004.0	-1419.1
915	2022-04-21T17:59:52.596000Z	3.415	338489.4	4262318.5	-1394.0
916	2022-04-21T17:59:53.673000Z	2.413	338820.9	4262326.0	-2087.0
917	2022-04-21T18:00:14.286000Z	3.020	330081.9	4264575.0	-590.8
918	2022-04-21T18:00:20.599000Z	3.637	334220.0	4263777.5	-527.7
919	2022-04-21T18:00:25.577000Z	3.102	335826.4	4263561.5	-987.5
920	2022-04-21T18:00:42.267000Z	2.324	336157.0	4263364.5	-917.7
921	2022-04-21T18:01:29.247000Z	3.120	336885.1	4262564.0	-740.5
922	2022-04-21T18:01:37.760000Z	2.675	338776.7	4262022.5	-1870.0
923	2022-04-21T18:01:56.080000Z	4.073	337271.2	4262857.0	-981.1
924	2022-04-21T18:03:26.414000Z	2.139	336311.8	4262709.5	-408.1
925	2022-04-21T18:06:47.611000Z	3.012	336967.8	4262406.0	-882.3
926	2022-04-21T18:06:53.238000Z	3.113	334114.0	4263175.5	-256.1
927	2022-04-21T18:07:37.580000Z	4.097	338363.4	4262360.0	-1760.0
928	2022-04-21T18:07:43.455000Z	3.243	337791.3	4262510.0	-1403.8
929	2022-04-21T18:08:20.300000Z	2.786	339355.1	4262498.5	-1930.4
930	2022-04-21T18:08:34.638000Z	3.067	338644.8	4262643.5	-1651.0
931	2022-04-21T18:09:03.371000Z	2.005	338628.7	4262086.5	-1694.5
932	2022-04-21T18:09:22.721000Z	4.451	334854.6	4263091.5	-892.1
933	2022-04-21T18:09:24.666000Z	3.273	337031.9	4262503.5	-1433.0
934	2022-04-21T18:09:46.454000Z	3.290	336906.2	4262529.5	-612.8
935	2022-04-21T18:10:33.894000Z	3.086	336965.8	4262527.5	-923.4
936	2022-04-21T18:10:55.077000Z	2.435	333681.9	4264134.0	-677.6
937	2022-04-21T18:12:36.899000Z	3.298	337206.5	4262479.0	-1551.5
938	2022-04-21T18:13:02.463000Z	2.884	337164.0	4262780.0	-676.8
939	2022-04-21T18:13:50.637000Z	2.389	336163.4	4262650.5	-707.5
940	2022-04-21T18:14:18.071000Z	4.214	336022.1	4263188.5	-1038.4
941	2022-04-21T18:14:25.018000Z	3.015	335890.9	4262713.5	-84.1
942	2022-04-21T18:14:34.528000Z	2.167	335407.1	4263560.5	-317.3
943	2022-04-21T18:15:51.379000Z	3.335	339068.8	4262578.0	-1671.1

944	2022-04-21T18:16:00.139000Z	3.526	337858.2	4262464.5	-865.4
945	2022-04-21T18:16:43.058000Z	3.901	338150.8	4262227.0	-1310.6
946	2022-04-21T18:16:46.477000Z	3.080	336184.5	4263340.0	-763.5
947	2022-04-21T18:16:47.329000Z	2.143	337350.4	4262631.5	-887.6
948	2022-04-21T18:19:03.098000Z	2.506	338116.6	4262841.5	-1433.2
949	2022-04-21T18:19:05.062000Z	2.680	338005.4	4262555.0	-1667.1
950	2022-04-21T18:20:55.623000Z	2.228	337823.8	4262283.5	-1182.8
951	2022-04-21T18:21:15.029000Z	3.415	337591.8	4262256.5	-918.4
952	2022-04-21T18:21:46.550000Z	3.646	337694.0	4262227.0	-1033.6
953	2022-04-21T18:22:15.482000Z	3.169	334784.8	4263192.0	-114.8
954	2022-04-21T18:23:07.017000Z	4.056	336739.8	4262479.0	-589.4
955	2022-04-21T18:23:43.221000Z	3.824	334934.1	4263008.5	-305.0
956	2022-04-21T18:24:01.003000Z	3.446	338897.7	4262094.5	-1375.8
957	2022-04-21T18:24:35.612000Z	3.180	336249.2	4263214.5	-1082.9
958	2022-04-21T18:25:08.686000Z	3.256	338275.2	4262369.5	-1516.1
959	2022-04-21T18:25:09.545000Z	2.056	336805.4	4262579.5	-757.3
960	2022-04-21T18:26:14.215000Z	2.884	336139.5	4263364.0	-409.6
961	2022-04-21T18:29:37.648000Z	3.482	334315.0	4263855.0	133.2
962	2022-04-21T18:30:01.529000Z	3.706	336970.1	4262626.0	-563.4
963	2022-04-21T18:30:33.968000Z	3.064	335941.5	4263011.5	-339.3
964	2022-04-21T18:32:56.448000Z	2.049	337562.8	4262268.5	-1257.2
965	2022-04-21T18:34:10.384000Z	4.290	338069.4	4262228.0	-1728.6
966	2022-04-21T18:34:11.035000Z	3.114	338527.7	4262621.5	-1849.5
967	2022-04-21T18:34:11.771000Z	3.090	334733.1	4263016.5	9.0
968	2022-04-21T18:34:36.488000Z	3.274	338299.5	4262168.5	-1704.3
969	2022-04-21T18:35:00.973000Z	2.801	338982.5	4262400.0	-1490.5
970	2022-04-21T18:36:11.907000Z	3.587	337682.2	4262957.0	-1036.7
971	2022-04-21T18:37:44.277000Z	5.442	334916.3	4262998.0	-201.8
972	2022-04-21T18:39:15.944000Z	3.418	337838.7	4262378.5	-1544.6
973	2022-04-21T18:39:36.767000Z	3.150	334901.2	4262978.0	-321.7
974	2022-04-21T18:39:37.320000Z	3.316	335407.5	4263259.5	-355.4
975	2022-04-21T18:39:53.427000Z	2.771	336129.1	4262737.0	-706.9
976	2022-04-21T18:41:23.210000Z	3.651	333667.2	4263717.0	249.0
977	2022-04-21T18:41:27.288000Z	3.281	337541.6	4262724.5	-1022.3
978	2022-04-21T18:46:12.420000Z	3.457	337326.8	4263047.5	-838.8
979	2022-04-21T18:46:16.477000Z	3.248	336801.5	4262571.5	-1157.9
980	2022-04-21T18:46:42.224000Z	3.357	333895.8	4263961.0	673.8
981	2022-04-21T18:46:50.784000Z	4.756	338038.4	4262246.5	-1108.7
982	2022-04-21T18:47:20.538000Z	3.746	335312.2	4262960.5	-256.9
983	2022-04-21T18:47:29.919000Z	3.868	337851.0	4262751.0	-1384.8
984	2022-04-21T18:48:26.983000Z	3.752	334892.0	4263676.0	-550.6
985	2022-04-21T18:49:28.590000Z	1.907	334547.5	4263907.5	-437.8
986	2022-04-21T18:50:05.244000Z	3.349	337519.0	4262263.5	-1132.7

987	2022-04-21T18:50:06.084000Z	2.097	334922.6	4263070.0	-379.0
988	2022-04-21T18:50:09.662000Z	3.054	330052.8	4264921.0	-760.3
989	2022-04-21T18:50:10.823000Z	N/A	N/A	N/A	N/A
990	2022-04-21T18:50:52.773000Z	3.536	336045.3	4262879.0	-1008.9
991	2022-04-21T18:50:55.485000Z	3.376	337290.2	4262537.5	-921.0
992	2022-04-21T18:52:14.241000Z	2.899	337735.4	4262205.0	-1543.8
993	2022-04-21T18:52:37.427000Z	2.229	336806.8	4262676.0	-940.5
994	2022-04-21T18:52:57.019000Z	2.904	335047.7	4263120.5	-354.5
995	2022-04-21T18:54:24.841000Z	3.532	338103.2	4262416.5	-1130.6
996	2022-04-21T18:55:33.042000Z	3.661	334500.9	4263188.0	-617.3
997	2022-04-21T18:56:29.410000Z	2.191	334059.1	4263503.5	-86.3
998	2022-04-21T18:56:56.390000Z	N/A	N/A	N/A	N/A
999	2022-04-21T18:57:44.842000Z	2.555	337305.7	4262957.0	-973.9
1000	2022-04-21T18:59:19.829000Z	3.037	334720.8	4263637.5	-231.9
1001	2022-04-21T18:59:24.706000Z	3.745	335335.0	4262960.5	-199.8
1002	2022-04-21T19:00:11.895000Z	N/A	N/A	N/A	N/A
1003	2022-04-21T19:00:19.361000Z	2.368	335119.7	4263022.5	-316.9
1004	2022-04-21T19:00:27.703000Z	3.317	338113.6	4262518.0	-1584.0
1005	2022-04-21T19:01:40.254000Z	3.408	337159.1	4262777.5	-997.6
1006	2022-04-21T19:03:00.656000Z	3.145	336112.7	4262712.5	-1018.0
1007	2022-04-21T19:03:09.899000Z	2.762	334431.7	4263817.5	-406.7
1008	2022-04-21T19:03:23.745000Z	3.044	335479.9	4263542.0	-589.8
1009	2022-04-21T19:03:47.672000Z	N/A	N/A	N/A	N/A
1010	2022-04-21T19:03:56.043000Z	1.944	337375.8	4263043.0	-1005.4
1011	2022-04-21T19:04:34.067000Z	7.230	338554.2	4262726.0	-2058.7
1012	2022-04-21T19:04:34.918000Z	3.295	337353.5	4262422.5	-1223.5
1013	2022-04-21T19:07:19.995000Z	3.610	337217.7	4262700.0	-820.7
1014	2022-04-21T19:08:51.263000Z	2.445	335675.4	4263226.0	-598.5
1015	2022-04-21T19:09:41.355000Z	2.756	338529.0	4262101.5	-1798.0
1016	2022-04-21T19:11:09.774000Z	3.122	334076.4	4263227.0	-178.5
1017	2022-04-21T19:11:13.594000Z	8.729	336095.9	4263116.0	-1025.7
1018	2022-04-21T19:11:14.373000Z	3.118	337939.6	4262887.0	-1481.7
1019	2022-04-21T19:12:06.183000Z	3.199	337554.4	4262370.5	-919.1
1020	2022-04-21T19:14:25.402000Z	3.074	335207.9	4262893.5	-173.5
1021	2022-04-21T19:14:56.772000Z	5.432	334352.2	4263225.5	-653.6
1022	2022-04-21T19:16:17.609000Z	2.778	336136.5	4262962.0	-1006.8
1023	2022-04-21T19:17:07.641000Z	2.675	338862.2	4262632.0	-1373.0
1024	2022-04-21T19:17:44.933000Z	2.441	335949.8	4262897.5	-649.3
1025	2022-04-21T19:17:54.061000Z	2.857	336152.9	4263336.5	-826.1
1026	2022-04-21T19:17:54.398000Z	3.660	335861.7	4262982.0	-1002.3
1027	2022-04-21T19:18:14.011000Z	2.700	335381.9	4263179.5	-769.5
1028	2022-04-21T19:18:36.371000Z	3.261	337339.3	4263081.5	-1019.8
1029	2022-04-21T19:18:46.905000Z	3.496	338864.8	4261927.5	-1039.1

1030	2022-04-21T19:19:11.857000Z	4.737	335242.9	4262974.0	-895.6
1031	2022-04-21T19:19:12.706000Z	3.680	336822.0	4262567.0	-923.2
1032	2022-04-21T19:20:12.754000Z	3.243	329912.2	4264419.0	-681.7
1033	2022-04-21T19:20:30.238000Z	2.588	329876.0	4264288.0	-669.7
1034	2022-04-21T19:20:59.666000Z	N/A	N/A	N/A	N/A
1035	2022-04-21T19:21:02.116000Z	2.620	338069.2	4262805.0	-1329.3
1036	2022-04-21T19:22:23.148000Z	3.104	334283.6	4263454.5	-384.2
1037	2022-04-21T19:22:34.729000Z	3.671	335221.1	4263234.0	-733.5
1038	2022-04-21T19:22:39.778000Z	2.087	336266.8	4262558.5	-1025.5
1039	2022-04-21T19:22:53.072000Z	2.821	338550.0	4262637.0	-1759.0
1040	2022-04-21T19:23:09.398000Z	2.314	333855.8	4263857.0	12.6
1041	2022-04-21T19:23:41.910000Z	3.615	336348.2	4262900.5	-676.8
1042	2022-04-21T19:23:45.236000Z	3.087	338393.7	4262761.5	-1123.3
1043	2022-04-21T19:25:09.614000Z	2.694	335591.9	4262793.5	-776.9
1044	2022-04-21T19:25:47.537000Z	3.171	337950.4	4262244.5	-1602.1
1045	2022-04-21T19:25:51.613000Z	6.590	333629.5	4263957.0	889.2
1046	2022-04-21T19:25:53.171000Z	4.738	337481.4	4262536.5	-768.1
1047	2022-04-21T19:26:15.149000Z	3.712	335469.4	4263131.0	-383.6
1048	2022-04-21T19:26:33.334000Z	5.264	334535.8	4263806.0	-890.2
1049	2022-04-21T19:26:34.200000Z	3.310	338223.5	4262548.0	-1515.1
1050	2022-04-21T19:26:51.208000Z	3.397	330155.0	4264546.0	-1016.4
1051	2022-04-21T19:27:26.116000Z	3.383	334548.8	4263089.5	52.6
1052	2022-04-21T19:27:30.198000Z	3.691	337525.8	4262263.5	-926.4
1053	2022-04-21T19:27:55.125000Z	2.729	334698.6	4263230.0	-451.2
1054	2022-04-21T19:32:22.285000Z	2.843	337439.2	4263005.5	-801.4
1055	2022-04-21T19:33:45.375000Z	N/A	N/A	N/A	N/A
1056	2022-04-21T19:34:57.806000Z	3.188	336102.2	4263242.5	-756.8
1057	2022-04-21T19:35:02.894000Z	2.382	338429.8	4262234.0	-1818.2
1058	2022-04-21T19:35:11.042000Z	3.666	339243.3	4262535.5	-1701.9
1059	2022-04-21T19:35:50.889000Z	3.131	334898.0	4263562.0	-356.1
1060	2022-04-21T19:36:25.881000Z	N/A	N/A	N/A	N/A
1061	2022-04-21T19:37:48.421000Z	2.791	334494.5	4263595.5	73.1
1062	2022-04-21T19:38:26.287000Z	3.230	338040.6	4262877.0	-921.0
1063	2022-04-21T19:39:53.492000Z	2.975	338055.7	4262226.0	-767.3
1064	2022-04-21T19:40:02.507000Z	N/A	N/A	N/A	N/A
1065	2022-04-21T19:40:55.838000Z	N/A	N/A	N/A	N/A
1066	2022-04-21T19:41:31.815000Z	2.928	337853.6	4263012.0	-1309.3
1067	2022-04-21T19:45:20.587000Z	2.788	338150.9	4262634.0	-1264.2
1068	2022-04-21T19:46:06.673000Z	4.877	337864.2	4262284.0	-1368.1
1069	2022-04-21T19:46:35.265000Z	3.444	336366.3	4262582.5	-947.1
1070	2022-04-21T19:46:40.393000Z	2.337	337584.5	4262264.0	-1367.7
1071	2022-04-21T19:46:51.762000Z	2.671	338554.2	4262713.5	-1451.5
1072	2022-04-21T19:47:31.835000Z	N/A	N/A	N/A	N/A

1073	2022-04-21T19:47:57.028000Z	N/A	N/A	N/A	N/A
1074	2022-04-21T19:48:18.052000Z	3.022	337123.1	4262687.0	-1031.4
1075	2022-04-21T19:48:59.927000Z	N/A	N/A	N/A	N/A
1076	2022-04-21T19:50:01.534000Z	2.335	338772.8	4261924.0	-1478.6
1077	2022-04-21T19:52:59.173000Z	3.191	338587.1	4261982.5	-1580.4
1078	2022-04-21T19:53:36.238000Z	3.514	338643.4	4262182.5	-1877.0
1079	2022-04-21T19:55:12.067000Z	3.161	335548.7	4263009.0	-1008.6
1080	2022-04-21T19:55:32.956000Z	3.416	335381.0	4263556.5	-691.0
1081	2022-04-21T19:55:39.707000Z	3.313	337662.7	4262380.0	-986.9
1082	2022-04-21T19:58:02.689000Z	2.306	333870.4	4263410.5	90.1
1083	2022-04-21T20:00:23.141000Z	6.641	335180.9	4263561.5	-885.5
1084	2022-04-21T20:00:42.444000Z	N/A	N/A	N/A	N/A
1085	2022-04-21T20:01:51.038000Z	3.188	334743.2	4263117.0	-648.3
1086	2022-04-21T20:02:16.570000Z	3.739	335098.9	4263609.5	-291.7
1087	2022-04-21T20:02:28.781000Z	2.410	336744.5	4262475.0	-1032.7
1088	2022-04-21T20:02:35.718000Z	2.367	337774.4	4262305.5	-1106.7
1089	2022-04-21T20:03:29.110000Z	3.147	335802.2	4263236.0	-585.0
1090	2022-04-21T20:03:34.489000Z	3.194	337964.2	4262269.5	-1424.4
1091	2022-04-21T20:04:03.161000Z	3.225	330257.7	4264923.0	-690.7
1092	2022-04-21T20:04:03.741000Z	2.162	335619.5	4263614.0	-1219.2
1093	2022-04-21T20:04:32.480000Z	2.620	335817.9	4262993.0	-722.5
1094	2022-04-21T20:04:56.610000Z	N/A	N/A	N/A	N/A
1095	2022-04-21T20:05:58.017000Z	3.042	337655.6	4262343.5	-1131.3
1096	2022-04-21T20:07:54.097000Z	3.169	336145.4	4263252.0	-767.4
1097	2022-04-21T20:08:06.872000Z	3.451	335189.3	4263636.5	-109.7
1098	2022-04-21T20:08:10.573000Z	2.576	334422.2	4263091.5	-178.4
1099	2022-04-21T20:08:20.929000Z	2.500	337374.1	4262894.5	-1002.6
1100	2022-04-21T20:08:30.436000Z	2.930	337185.1	4262487.5	-832.8
1101	2022-04-21T20:08:39.800000Z	2.043	336599.3	4262613.5	-946.4
1102	2022-04-21T20:10:04.582000Z	3.236	338942.3	4262406.5	-1553.6
1103	2022-04-21T20:10:05.707000Z	2.411	338631.7	4262600.5	-1529.7
1104	2022-04-21T20:10:28.810000Z	2.436	338459.5	4262637.5	-1340.2
1105	2022-04-21T20:10:50.946000Z	2.203	337378.3	4262411.0	-1280.6
1106	2022-04-21T20:11:15.689000Z	3.888	334906.0	4263792.0	-464.4
1107	2022-04-21T20:11:54.398000Z	4.494	338417.2	4262858.0	-1703.7
1108	2022-04-21T20:12:18.934000Z	2.925	339023.3	4261978.0	-1456.8
1109	2022-04-21T20:12:25.797000Z	3.335	338290.2	4262474.5	-1817.9
1110	2022-04-21T20:13:25.680000Z	2.127	337935.8	4262467.5	-1565.3
1111	2022-04-21T20:14:04.755000Z	3.259	334989.4	4263678.0	68.2
1112	2022-04-21T20:14:08.138000Z	3.467	336279.8	4263305.5	-699.2
1113	2022-04-21T20:15:03.179000Z	N/A	N/A	N/A	N/A
1114	2022-04-21T20:15:46.965000Z	2.801	333654.2	4263329.5	-106.5
1115	2022-04-21T20:15:50.053000Z	10.256	334980.8	4263170.5	-582.7

1116	2022-04-21T20:15:50.912000Z	3.539	338441.3	4262662.5	-1919.0
1117	2022-04-21T20:18:32.137000Z	N/A	N/A	N/A	N/A
1118	2022-04-21T20:19:10.948000Z	2.295	339246.8	4262518.5	-1729.6
1119	2022-04-21T20:19:27.660000Z	2.909	337434.2	4262579.0	-1448.2
1120	2022-04-21T20:20:59.029000Z	2.688	335789.3	4263456.0	-437.4
1121	2022-04-21T20:21:49.964000Z	N/A	N/A	N/A	N/A
1122	2022-04-21T20:22:05.845000Z	2.364	339262.9	4262217.0	-1457.6
1123	2022-04-21T20:22:06.863000Z	3.005	336857.5	4262455.0	-907.0
1124	2022-04-21T20:22:20.241000Z	N/A	N/A	N/A	N/A
1125	2022-04-21T20:24:27.360000Z	3.612	336259.3	4263329.5	-494.5
1126	2022-04-21T20:29:38.714000Z	3.103	338006.1	4262889.5	-1437.4
1127	2022-04-21T20:31:09.398000Z	3.683	337865.4	4262753.0	-1372.2
1128	2022-04-21T20:31:46.546000Z	1.972	339202.5	4261917.0	-985.2
1129	2022-04-21T20:31:52.826000Z	1.911	336162.1	4262640.0	-701.9
1130	2022-04-21T20:32:45.296000Z	3.593	338376.0	4262047.0	-1124.3
1131	2022-04-21T20:33:25.721000Z	3.877	337562.3	4262879.0	-1225.5
1132	2022-04-21T20:34:18.939000Z	3.240	338444.8	4262226.0	-1759.8
1133	2022-04-21T20:34:32.957000Z	3.359	336734.3	4262458.5	-614.3
1134	2022-04-21T20:35:14.813000Z	2.563	337550.7	4263005.0	-959.6
1135	2022-04-21T20:37:40.757000Z	3.009	335264.7	4263401.0	-715.7
1136	2022-04-21T20:38:25.327000Z	3.520	337910.0	4262547.5	-1110.0
1137	2022-04-21T20:40:06.599000Z	3.223	333799.0	4263576.5	-439.8
1138	2022-04-21T20:40:47.921000Z	3.600	337289.6	4263035.5	-1052.6
1139	2022-04-21T20:41:18.988000Z	3.059	334781.1	4263722.0	369.7
1140	2022-04-21T20:41:39.445000Z	2.507	334794.2	4263558.0	-242.2
1141	2022-04-21T20:41:54.060000Z	2.840	336178.0	4263460.0	-443.0
1142	2022-04-21T20:43:05.323000Z	3.159	336939.0	4262533.5	-1374.2
1143	2022-04-21T20:43:26.123000Z	2.740	336779.4	4262575.5	-729.5
1144	2022-04-21T20:43:34.030000Z	2.078	329818.7	4264427.5	-643.7
1145	2022-04-21T20:44:21.133000Z	3.282	335066.1	4263544.0	-911.9
1146	2022-04-21T20:44:27.363000Z	2.674	335436.4	4263459.0	-257.9
1147	2022-04-21T20:44:30.806000Z	N/A	N/A	N/A	N/A
1148	2022-04-21T20:44:58.408000Z	2.068	337390.7	4262530.5	-942.2
1149	2022-04-21T20:45:07.216000Z	3.047	337723.8	4262630.0	-1095.5
1150	2022-04-21T20:45:33.749000Z	3.405	337355.1	4262423.5	-1012.0
1151	2022-04-21T20:45:45.832000Z	3.051	329836.2	4264492.0	-505.2
1152	2022-04-21T20:46:02.167000Z	3.875	338703.5	4261926.0	-1482.3
1153	2022-04-21T20:47:55.176000Z	2.138	334457.1	4263111.5	-821.6
1154	2022-04-21T20:48:05.741000Z	3.168	335778.0	4263569.0	-203.1
1155	2022-04-21T20:48:33.379000Z	2.434	337406.7	4262419.0	-1029.9
1156	2022-04-21T20:51:59.835000Z	5.042	334798.1	4263416.0	-713.4
1157	2022-04-21T20:53:21.811000Z	2.857	334072.7	4263904.5	-10.3
1158	2022-04-21T20:54:17.794000Z	2.622	330065.2	4264295.0	-869.9

1159	2022-04-21T20:55:30.827000Z	2.611	334441.1	4263098.5	429.4
1160	2022-04-21T20:55:47.921000Z	3.181	334152.5	4263908.5	-202.7
1161	2022-04-21T20:56:03.341000Z	3.308	339231.2	4262438.0	-1222.5
1162	2022-04-21T20:57:15.471000Z	3.374	335245.2	4262991.0	-412.8
1163	2022-04-21T20:57:55.054000Z	2.612	338896.7	4262006.0	-1639.9
1164	2022-04-21T20:58:06.793000Z	3.612	335762.1	4263466.0	-621.5
1165	2022-04-21T20:59:50.925000Z	4.894	330154.5	4264869.5	-1011.3
1166	2022-04-21T20:59:58.104000Z	3.967	338862.8	4262230.0	-1342.8
1167	2022-04-21T21:01:18.908000Z	2.576	334254.8	4263460.0	-166.4
1168	2022-04-21T21:01:27.289000Z	2.639	337369.0	4262429.5	-946.1
1169	2022-04-21T21:01:55.477000Z	N/A	N/A	N/A	N/A
1170	2022-04-21T21:03:12.469000Z	2.385	334801.3	4263710.5	476.1
1171	2022-04-21T21:03:31.359000Z	N/A	N/A	N/A	N/A
1172	2022-04-21T21:04:00.415000Z	2.509	339246.6	4262119.0	-1815.3
1173	2022-04-21T21:04:28.360000Z	4.287	336106.0	4263170.0	-1040.1
1174	2022-04-21T21:04:43.939000Z	2.736	338142.4	4262432.5	-1881.6
1175	2022-04-21T21:04:49.816000Z	2.711	338350.2	4262369.0	-1231.3
1176	2022-04-21T21:05:13.126000Z	3.227	338844.2	4262439.5	-1633.4
1177	2022-04-21T21:06:51.271000Z	2.585	333240.4	4263530.5	193.7
1178	2022-04-21T21:08:56.414000Z	3.419	338389.0	4262656.5	-1305.7
1179	2022-04-21T21:10:04.626000Z	2.432	337201.2	4262360.5	-1021.5
1180	2022-04-21T21:10:08.441000Z	3.149	339223.9	4262427.0	-1938.0
1181	2022-04-21T21:12:30.767000Z	3.316	335394.7	4263158.0	-467.4
1182	2022-04-21T21:12:32.496000Z	2.626	336872.0	4262547.0	-1038.3
1183	2022-04-21T21:12:58.316000Z	3.666	335217.0	4263719.5	-292.7
1184	2022-04-21T21:13:03.550000Z	N/A	N/A	N/A	N/A
1185	2022-04-21T21:13:39.904000Z	2.061	335832.1	4263346.0	-738.8
1186	2022-04-21T21:13:45.690000Z	3.665	338405.1	4262035.0	-1460.4
1187	2022-04-21T21:13:46.489000Z	2.351	330173.7	4265059.5	-885.0
1188	2022-04-21T21:14:57.369000Z	2.747	338995.7	4261985.0	-1637.8
1189	2022-04-21T21:17:21.488000Z	3.760	335407.9	4263670.5	-856.7
1190	2022-04-21T21:17:22.348000Z	3.206	338111.0	4262213.5	-1637.7
1191	2022-04-21T21:17:22.890000Z	3.304	335412.6	4263668.5	-973.0
1192	2022-04-21T21:17:28.110000Z	2.361	334787.1	4263835.5	-411.6
1193	2022-04-21T21:18:11.497000Z	3.441	338986.7	4261886.0	-1878.5
1194	2022-04-21T21:18:26.680000Z	3.142	337544.6	4262364.5	-1185.4
1195	2022-04-21T21:19:26.405000Z	2.862	338291.1	4262098.5	-1229.1
1196	2022-04-21T21:20:36.420000Z	2.116	337056.8	4263206.0	-677.2
1197	2022-04-21T21:23:14.529000Z	3.033	335337.7	4263065.5	-564.0
1198	2022-04-21T21:24:15.841000Z	3.144	337385.8	4262513.0	-1102.8
1199	2022-04-21T21:24:40.502000Z	4.138	336867.9	4262901.0	-1242.5
1200	2022-04-21T21:25:45.086000Z	3.963	334617.4	4263699.0	-658.4
1201	2022-04-21T21:26:07.342000Z	2.303	338693.8	4262675.0	-1972.0

1202	2022-04-21T21:30:25.911000Z	2.036	338123.8	4262420.5	-1400.1
1203	2022-04-21T21:32:07.550000Z	3.153	336763.1	4262478.5	-680.4
1204	2022-04-21T21:32:32.126000Z	N/A	N/A	N/A	N/A
1205	2022-04-21T21:33:31.151000Z	2.703	337390.6	4262935.5	-700.8
1206	2022-04-21T21:34:05.048000Z	6.266	335115.6	4263179.0	-788.6
1207	2022-04-21T21:37:29.782000Z	2.845	337196.1	4262625.0	-941.9
1208	2022-04-21T21:37:50.420000Z	2.381	336259.9	4263244.0	-792.6
1209	2022-04-21T21:37:59.272000Z	3.387	334566.7	4263504.5	-527.1
1210	2022-04-21T21:38:24.398000Z	3.748	337927.1	4262272.5	-1700.4
1211	2022-04-21T21:41:32.311000Z	3.172	337369.3	4262841.0	-862.2
1212	2022-04-21T21:42:09.398000Z	2.405	334619.6	4263068.0	-130.8
1213	2022-04-21T21:42:09.941000Z	3.024	338660.8	4262694.0	-979.3
1214	2022-04-21T21:42:56.660000Z	3.352	333687.4	4264129.0	309.4
1215	2022-04-21T21:44:40.589000Z	3.289	335940.1	4262899.0	-618.1
1216	2022-04-21T21:45:55.300000Z	2.992	337677.4	4262924.5	-1211.2
1217	2022-04-21T21:46:26.484000Z	3.581	338675.7	4262373.0	-1940.0
1218	2022-04-21T21:49:42.275000Z	2.873	337747.8	4262732.5	-1037.0
1219	2022-04-21T21:50:01.056000Z	2.749	338618.6	4262391.0	-1425.0
1220	2022-04-21T21:50:41.274000Z	2.170	330205.2	4264346.5	-415.7
1221	2022-04-21T21:51:38.763000Z	2.268	334796.8	4263724.5	-106.7
1222	2022-04-21T21:52:03.032000Z	7.155	334652.8	4263457.5	-743.9
1223	2022-04-21T21:53:25.672000Z	N/A	N/A	N/A	N/A
1224	2022-04-21T21:54:17.190000Z	N/A	N/A	N/A	N/A
1225	2022-04-21T21:57:26.034000Z	3.291	336105.3	4262757.0	-769.8
1226	2022-04-21T22:02:55.767000Z	N/A	N/A	N/A	N/A
1227	2022-04-21T22:03:57.779000Z	N/A	N/A	N/A	N/A
1228	2022-04-21T22:05:17.716000Z	3.637	339036.8	4261867.5	-1486.9
1229	2022-04-21T22:07:36.135000Z	2.157	335841.3	4263448.0	-705.1
1230	2022-04-21T22:07:44.703000Z	2.184	337228.6	4262665.0	-1101.1
1231	2022-04-21T22:08:38.137000Z	3.011	334776.5	4263206.5	193.1
1232	2022-04-21T22:10:36.066000Z	2.150	336019.7	4262699.5	-481.5
1233	2022-04-21T22:10:40.748000Z	N/A	N/A	N/A	N/A
1234	2022-04-21T22:12:35.079000Z	3.397	335067.8	4263245.5	-173.3
1235	2022-04-21T22:16:54.811000Z	1.920	333544.1	4264055.5	151.0
1236	2022-04-21T22:19:10.576000Z	N/A	N/A	N/A	N/A
1237	2022-04-21T22:22:10.785000Z	3.244	334943.9	4263380.5	-293.4
1238	2022-04-21T22:22:51.495000Z	2.649	337873.2	4262291.0	-1437.3
1239	2022-04-21T22:23:15.157000Z	2.592	336222.8	4263233.5	-378.7
1240	2022-04-21T22:28:34.535000Z	2.174	336995.8	4262622.0	-708.7
1241	2022-04-21T22:29:19.188000Z	3.793	338142.4	4262207.5	-1819.2
1242	2022-04-21T22:30:33.771000Z	8.216	337656.8	4262774.5	-1377.6
1243	2022-04-21T22:30:55.517000Z	4.251	338402.2	4262760.5	-1734.6
1244	2022-04-21T22:30:59.800000Z	N/A	N/A	N/A	N/A

1245	2022-04-21T22:41:58.593000Z	3.171	335015.3	4262950.0	-58.8
1246	2022-04-21T22:42:06.676000Z	3.438	337480.9	4262479.5	-886.3
1247	2022-04-21T22:43:19.502000Z	3.604	335202.1	4263623.0	-858.2
1248	2022-04-21T22:45:08.545000Z	4.163	335395.3	4263152.5	-294.8
1249	2022-04-21T22:46:24.775000Z	4.091	337782.7	4262205.0	-1343.7
1250	2022-04-21T22:52:36.093000Z	N/A	N/A	N/A	N/A
1251	2022-04-21T22:53:53.233000Z	3.610	337345.6	4263084.0	-808.4
1252	2022-04-21T22:54:03.527000Z	2.737	336077.3	4262638.0	-965.3
1253	2022-04-21T23:00:08.984000Z	N/A	N/A	N/A	N/A
1254	2022-04-21T23:04:23.273000Z	3.183	334420.1	4263209.0	-376.3
1255	2022-04-21T23:11:40.747000Z	2.937	335335.3	4262975.0	-321.0
1256	2022-04-21T23:13:03.466000Z	3.523	338095.9	4262114.5	-1704.4
1257	2022-04-21T23:14:33.818000Z	3.320	336095.7	4263064.0	-1070.2
1258	2022-04-21T23:21:02.300000Z	2.497	339064.7	4262375.0	-1694.3
1259	2022-04-21T23:27:27.459000Z	3.872	337315.3	4262315.0	-1124.2
1260	2022-04-21T23:28:31.209000Z	2.820	338289.5	4262183.5	-1400.6
1261	2022-04-21T23:30:36.554000Z	3.340	337548.6	4262361.0	-1069.9
1262	2022-04-21T23:50:29.924000Z	3.444	336088.5	4262967.0	-1069.0
1263	2022-04-22T00:01:04.987000Z	N/A	N/A	N/A	N/A
1264	2022-04-22T00:02:41.811000Z	4.192	335513.0	4263334.0	-896.6
1265	2022-04-22T00:11:22.629000Z	N/A	N/A	N/A	N/A
1266	2022-04-22T00:12:05.881000Z	N/A	N/A	N/A	N/A
1267	2022-04-22T00:14:53.553000Z	3.411	337625.6	4262226.5	-1330.0
1268	2022-04-22T00:21:10.943000Z	2.116	336796.7	4262574.0	-862.3
1269	2022-04-22T00:25:38.198000Z	2.689	337570.8	4262267.5	-979.3
1270	2022-04-22T00:29:57.468000Z	2.183	334011.1	4263427.0	-556.9
1271	2022-04-22T00:34:27.775000Z	3.370	336978.8	4262526.0	-1156.2
1272	2022-04-22T00:34:42.874000Z	2.546	339357.0	4262343.0	-2040.5
1273	2022-04-22T00:41:55.556000Z	2.586	335983.6	4262986.5	-1002.2
1274	2022-04-22T00:43:26.513000Z	N/A	N/A	N/A	N/A
1275	2022-04-22T00:44:58.437000Z	2.828	336383.5	4262548.0	-1083.8
1276	2022-04-22T00:47:46.546000Z	2.288	337792.5	4262869.0	-2020.0
1277	2022-04-22T01:23:41.909000Z	3.409	336633.9	4263239.5	-1281.3
1278	2022-04-22T01:32:02.870000Z	2.296	338213.1	4262499.5	-1668.6
1279	2022-04-22T01:42:23.520000Z	2.924	336306.2	4262705.5	-1068.2
1280	2022-04-22T01:56:26.414000Z	N/A	N/A	N/A	N/A
1281	2022-04-22T01:57:37.003000Z	N/A	N/A	N/A	N/A
1282	2022-04-22T02:10:50.266000Z	N/A	N/A	N/A	N/A
1283	2022-04-22T02:23:32.410000Z	2.698	338019.8	4262130.5	-1219.2
1284	2022-04-22T02:36:42.387000Z	N/A	N/A	N/A	N/A
1285	2022-04-22T02:46:07.208000Z	N/A	N/A	N/A	N/A
1286	2022-04-22T02:49:37.578000Z	2.597	338619.8	4262075.0	-1787.2
1287	2022-04-22T02:50:15.659000Z	N/A	N/A	N/A	N/A

1288	2022-04-22T03:07:05.062000Z	N/A	N/A	N/A	N/A
1289	2022-04-22T03:54:02.000000Z	2.122	337421.2	4263023.5	-1040.2
1290	2022-04-22T04:38:33.277000Z	2.115	337691.9	4262852.0	-1520.6
1291	2022-04-22T04:49:19.060000Z	N/A	N/A	N/A	N/A
1292	2022-04-22T04:58:54.694000Z	2.341	336171.3	4262952.0	-857.4
1293	2022-04-22T05:25:41.055000Z	2.209	336970.6	4262524.0	-548.9
1294	2022-04-22T06:15:10.029000Z	3.815	337967.8	4262672.5	-1703.5
1295	2022-04-22T06:31:52.951000Z	2.443	335274.2	4263091.0	-386.7
1296	2022-04-22T06:34:44.901000Z	2.006	338134.8	4262217.0	-1580.6
1297	2022-04-22T07:06:49.384000Z	2.010	338685.4	4262363.5	-1182.5
1298	2022-04-22T07:13:45.756000Z	2.811	335633.3	4263545.0	-965.0
1299	2022-04-22T07:39:05.688000Z	9.080	338037.0	4262651.0	-1605.7
1300	2022-04-22T08:58:57.163000Z	3.222	337481.1	4262497.0	-765.5
1301	2022-04-22T11:25:54.524000Z	3.569	335881.2	4263067.0	-927.2
1302	2022-04-22T13:34:48.548000Z	2.147	336731.6	4262485.0	-1098.5
1303	2022-04-22T14:03:29.704000Z	2.046	337139.8	4262485.0	-771.1
1304	2022-04-22T15:38:28.020000Z	3.007	338833.5	4262546.0	-2210.3
1305	2022-04-22T17:55:04.205000Z	3.957	336442.2	4263131.0	-837.9
1306	2022-04-23T01:07:13.838000Z	3.585	339255.2	4262099.0	-1837.5
1307	2022-04-23T02:04:08.386000Z	2.299	338609.9	4262074.5	-1363.0
1308	2022-04-23T06:24:05.463000Z	2.104	337237.0	4262451.0	-917.4
1309	2022-04-23T06:30:20.915000Z	1.919	336165.9	4263347.0	-898.1

Table 5